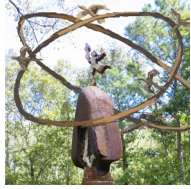


Discover the 2018 ArtAround Roswell Sculptures

1



The Uniting of Work and Spirit
Robert Clements

Mill Park

The hard work of welding metal is joined with the artist's vision about spirit. The sculpture's genesis was at a big Atlanta scrap metal yard. Does your work unite your spirit?

Sponsored by Randall-Paulson Architects

2



Ask The Fish 2.0
Dr. Stephen Fairfield

Don White Park at 400 Bridge

The fish symbolizes nature and creation, with the hand representing human kinds' dominion over the natural, yet still cherishing creation. What will you ask the fish?

Sponsored by Carl Black Roswell Buick GMC

3



Votive
Gregory Johnson

Don White Volleyball

A soft visual space is created to draw you in and results in a contemplative moment. Curves and circles sculpt feelings. Do you find balance and contemplation in this sculpture?

Sponsored by Lennar Multifamily

4



Open Low-Poly Heart
Matthew Duffy

East Roswell Park Entrance

Made out of aluminum diamond plate, often seen in truck boxes, it is an incredibly strong, but extremely light material. Can you see the technical and aesthetics aspects?

Sponsored by Gas South

5



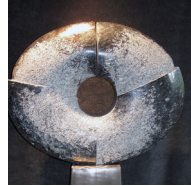
Ice Pops
Craig Gray

Riverside Park West, Playground

Watch as these giant popsicles appear to melt under the warmth of the sunshine. This work is inspired by the artist's family road trips as a child. What are your favorite childhood memories?

Sponsored by Synovus

6



Granite Ring
Chris Rothermel

Roswell Cultural Arts Center

This piece is carved from Blue Pearl Granite found on the artist's travels on research grant to China's sculpture zones. What materials in nature inspire you?

Sponsored by Miller Lowry Developments

7



Dual Nature
Cecilia Lueza

Big Creek Park Entrance of Old Alabama Road

Exploring color inspired by contradictions in human nature, one side is bright red, while the other side is a myriad of colors. What contradictions do you see?

Sponsored by Aesthetic Specialty Centre Plastic Surgery & Dermatology

8



Horse Apple
James Hetherington

Leita Thompson, Arts Center West Entrance

A visit to a child's memories. The artist's intention is to trigger the viewers and users curiosity, "Where did this come from? What was its former use?"

Sponsored by Pieper O'Brien Herr Architects

9



Social Tones
Nathan Pierce

Hembree Park

The work creates relevance to the fundamental principles and mission of learning and brings awareness to communication efforts as it relates to personal growth and change. What conversation does this sculpture spark for you?

Sponsored by ALDI

10

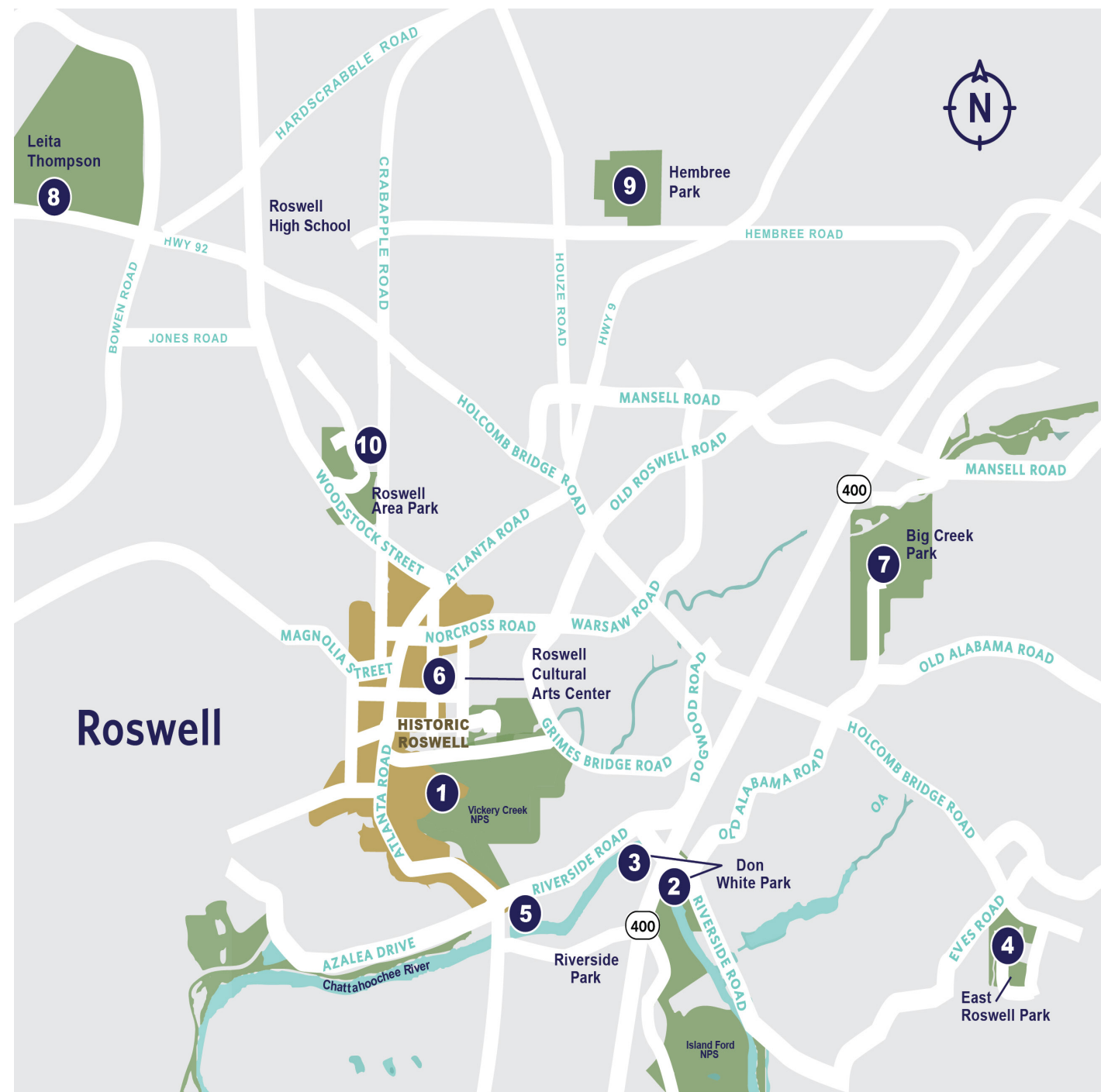


Celestial Fish
Donald Gialanella

Roswell Area Park Lake

The monumental fish is made up of over 500 pounds of automobile transmission parts. Gears and rings represent our solar system. Can you find Saturn, Mars, Earth and the Sun?

Sponsored by Canton Place Development



Learn more at roswellartsfund.org.

Explore ArtAround Roswell

ArtAround Roswell, an initiative of Roswell Arts Fund, features ten sculptures on loan to the city by their artists on display through March 2019, joining six permanent pieces purchased from previous tours.

You're invited to explore, experience, and enjoy!

Participate

- **LISTEN** to the artists talk about their sculptures by downloading the *Otocast app*
- **LEARN** about events, activities, and monthly contests on our website and social media
- **DONATE** to Keep the Art!
- **FOLLOW** @ArtAroundRoswell on Facebook, Twitter, and @RoswellArts on Instagram
- **TAG** your photos #artaroundroswell on Instagram for a chance to win monthly prizes
- **GET INVOLVED** with Roswell Arts Fund



Roswell Arts Fund is a non-profit 501(c)(3) organization.

An Initiative of Roswell Arts Fund

ArtAround Roswell is a partnership between the City of Roswell and Roswell Arts Fund initiated to bring the benefits of public art to the city, including community involvement and enrichment.

Roswell Arts Fund is an independent 501(c)(3) nonprofit organization that works in collaboration with the City of Roswell. Roswell Arts Fund was founded to strengthen the scope of public arts in the city and to champion the ability of the arts to excite the imagination, strengthen public places, and encourage conversation.

More information about Roswell Arts Fund can be found at www.roswellartsfund.org.

