

## EXHIBIT A – DEVELOPMENT IMAGERY

# DEVELOPMENT OVERVIEW

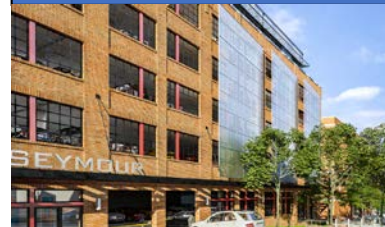


## A – RESIDENTIAL & RETAIL



200 units  
30,000 SF retail  
10,000 SF arts space  
224 parking spaces  
6 stories

## B – OFFICE & PARKING



32,000 SF office  
210 parking spaces  
94,000 SF garage  
7 stories

## C – MIDTOWN DECK



315 parking spaces  
121,000 SF  
5 stories  
For municipal use

## D – PUBLIC PLAZA



14,000 SF  
Landscape/hardscape  
For public use



# DEVELOPMENT IMAGERY



RESIDENTIAL & RETAIL DEVELOPMENT



PUBLIC PLAZA



OFFICE DEVELOPMENT



RESIDENTIAL & RETAIL DEVELOPMENT



# MIDTOWN DECK – CONCEPT IMAGERY



## EAST ELEVATION

Three panels (each 6' x 18.5') on façade of tower element



## NORTH AND WEST ELEVATIONS

Continuous panel (4' high and approximately 290' of total length) on façade of north (long dimension) and west (short dimension) elevations

**Note:** The art in the renderings above was prepared as a placeholder for municipal review only and does not represent a suggestion or constraint.

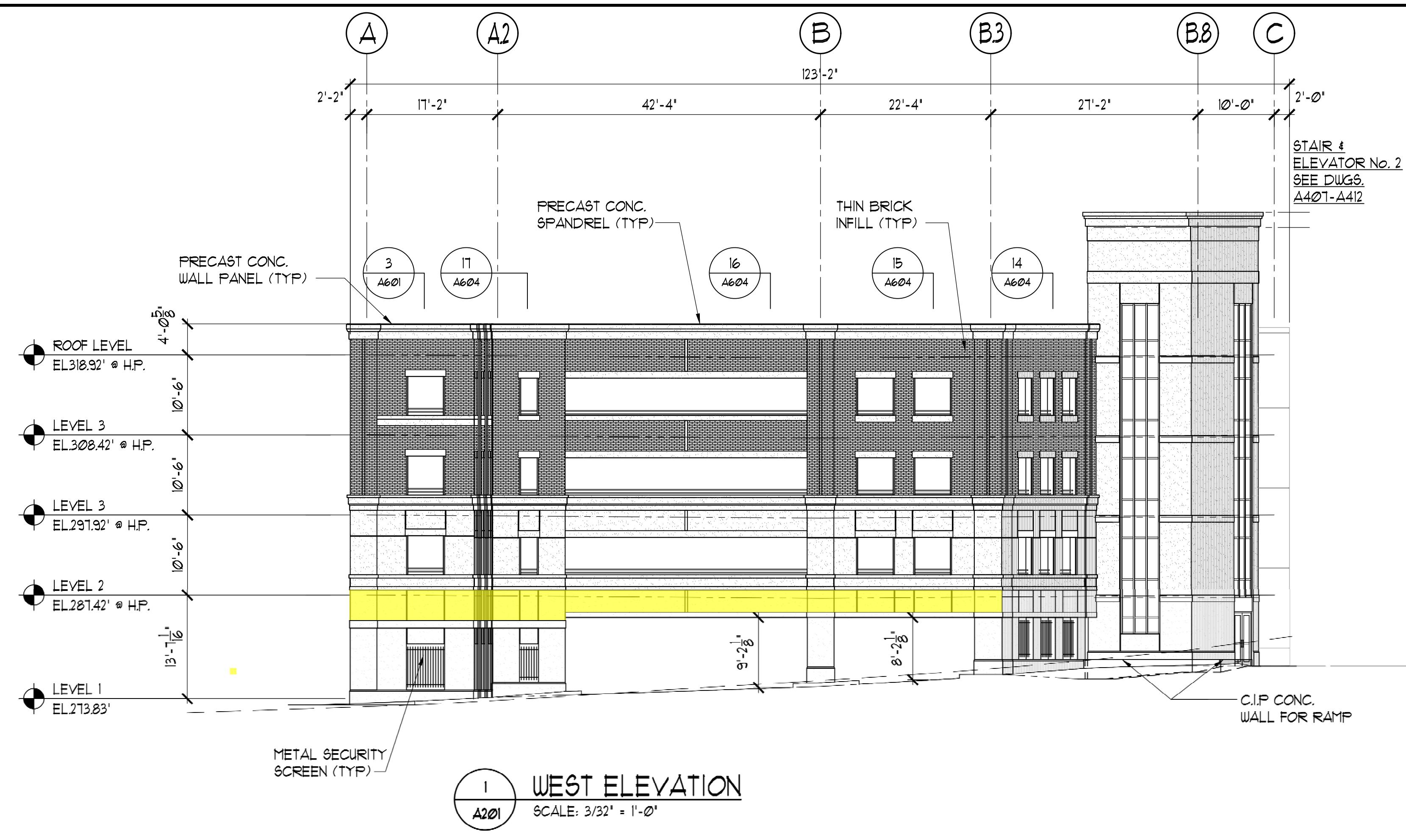
## EXHIBIT B – ARCHITECTURAL ELEVATIONS



Copyright © 2017 DESMAN, Inc. All rights reserved. No part of these documents may be reproduced in any form or by any means without written permission from DESMAN, Inc.

NO.	DATE	DESCRIPTION

DRAWING TITLE: NORTH AND WEST ELEVATIONS		
DRAWING NO. A201		
SCALE: 3/32"=1'-0"		
DATE: 04/19/2018		
PROJECT NO: 10-17121-1		
DES. FT	DRWN. SM	CHK'D. BW

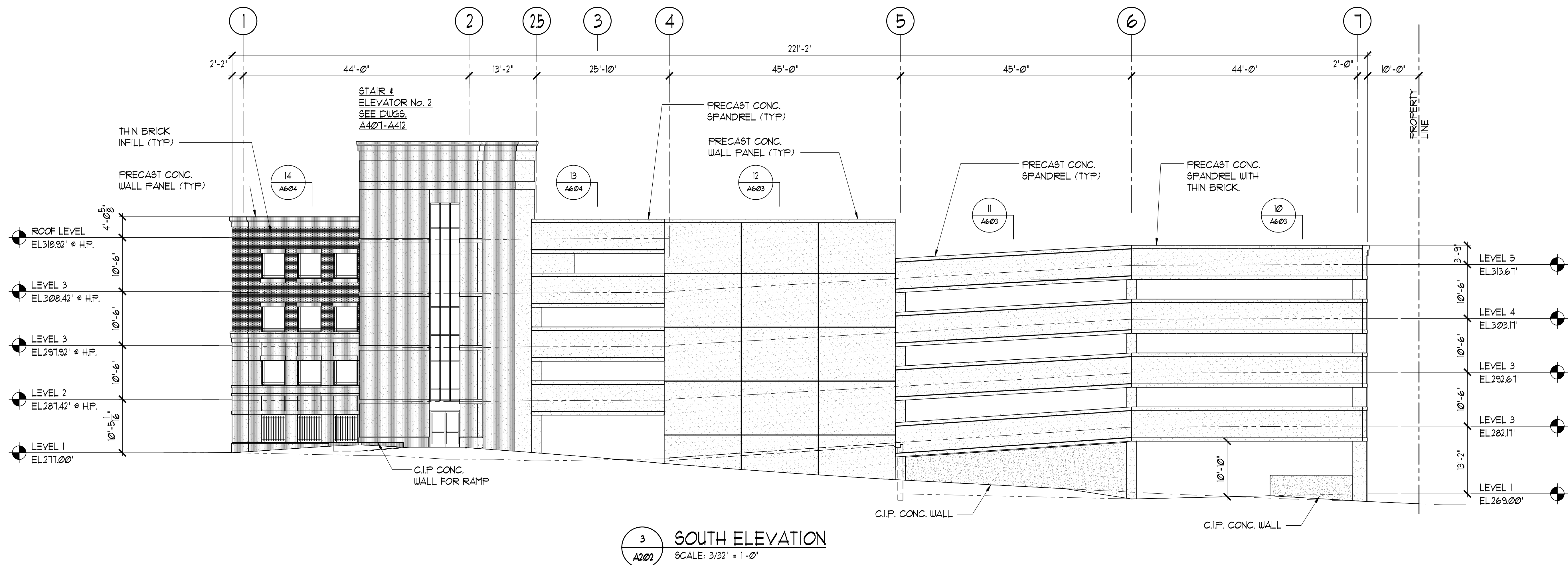
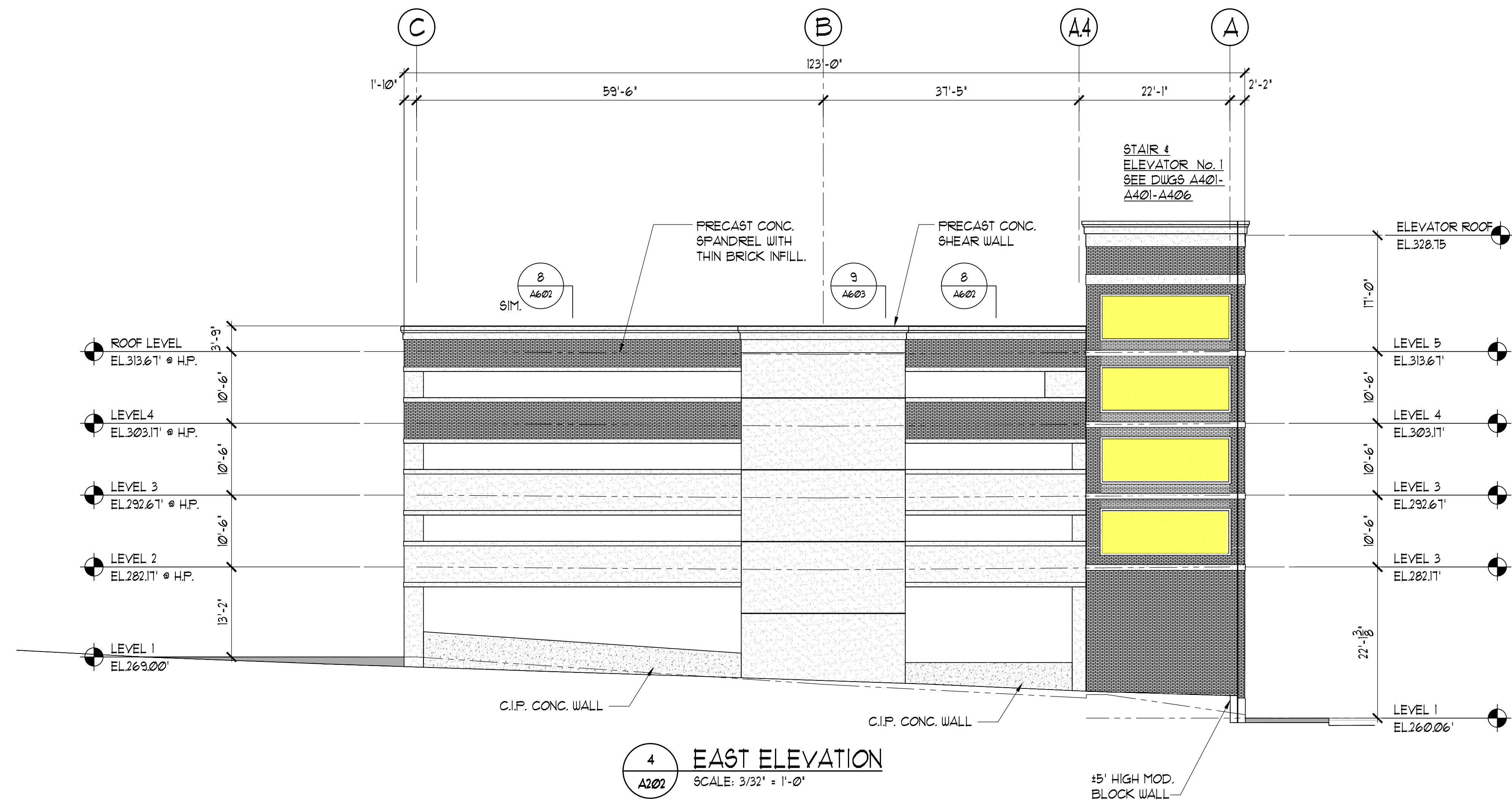


1 WEST ELEVATION  
A201 SCALE: 3/32" = 1'-0"



1 NORTH ELEVATION  
A201 SCALE: 3/32" = 1'-0"





NO.	DATE	DESCRIPTION

DRAWING TITLE:  
**SOUTH AND  
EAST  
ELEVATIONS**  
DRAWING NO.  
**A202**

SCALE: 3/32"=1'-0"		
DATE: 04/19/2018		
PROJECT NO: 10-17121-1		
DES.	DRWN.	CHK'D.
FT	SM	BW