



## Art in Public Places Request for Qualifications

Project: Georgian Acres Neighborhood Park, District 4

Artwork Budget: \$34,000

**Deadline – Extended: Thursday, August 6, 2020 at 5 p.m. (CST)**

### Project Summary

The City of Austin Art in Public Places (AIPP) program of the Cultural Arts Division, Economic Development Department seeks to commission a permanent exterior public artwork that reflects the rich cultural diversity and distinguishing natural environment of the Georgian Acres community within the neighborhood's new 5-acre, wooded park.

### Project Background

The Georgian Acres Neighborhood is located in north Austin. It is bordered by Lamar Boulevard to the west, 135 to the east, East Runderberg Lane to the north, and 183 to the south. It is a diverse residential area with young families as well as older residents.

Georgian Acres lies within an area of the city's urban core that (until the last decade or so) was largely unplanned. The neighborhood and the adjacent North Lamar area were annexed into the city limits between 1945 and 1984 (City of Austin, 2010, p. 12). In 2006, Austin City Council acted to begin the planning process for Georgian Acres and North Lamar (City of Austin, 2010, p. 1). Together, these two areas constituted the North Lamar Combined Neighborhood Planning Area (NLCNPA) under the City's design.

The NLCNPA is approximately 1,297 acres of urban neighborhood with many suburban features (City of Austin, 2010, p. 12-13). The area is marked by single-family, single-story, ranch-style homes and multifamily housing units (i.e. apartments). Most of the NLCNPA's commercial development is located around its periphery and includes automobile-oriented, industrial-type, and travel-related (hotels, motels, etc.) establishments as well as strip malls and various restaurants.



Historically, Georgian Acres was the territory of the [Tonkawa](#) and [Nemaneh \(Comanche\)](#) (Temprano, 2019). The area's primary natural feature—Little Walnut Creek and its tributaries—was the site of clashes between indigenous peoples and early European immigrants (City of Austin, 2010, p. 12). The creek bed was later used by farmers and ranchers for its water and fertile soil. In response to threatening erosion, parts of the creek's banks

were stabilized in 1995. The creek is located less than a mile north of the Georgian Acres Neighborhood Park plot.

Since 1990, the NLCNPA has become a neighborhood rich in cultural and racial/ethnic diversity (City of Austin, 2010, p. 19). The NLCNPA is home to a high immigrant population and is largely Spanish speaking. In 2018, the American Community Survey reported that 69.2% of the Georgian Acres community were Hispanic or Latino (City of Austin, 2014-2018, p. Demographic) and 35.6% were born outside of the U.S. (City of Austin, 2014-2018, p. Social)—as interpreted by the City of Austin. In the past, the NLCNPA has been considered an “immigrant gateway,” especially for those arriving from Mexico and Central America (City of Austin, 2010, p. 21). The Georgian Acres Neighborhood Association also notes that the area has the highest amount of children and some of the most multi-family housing units of anywhere in Austin.

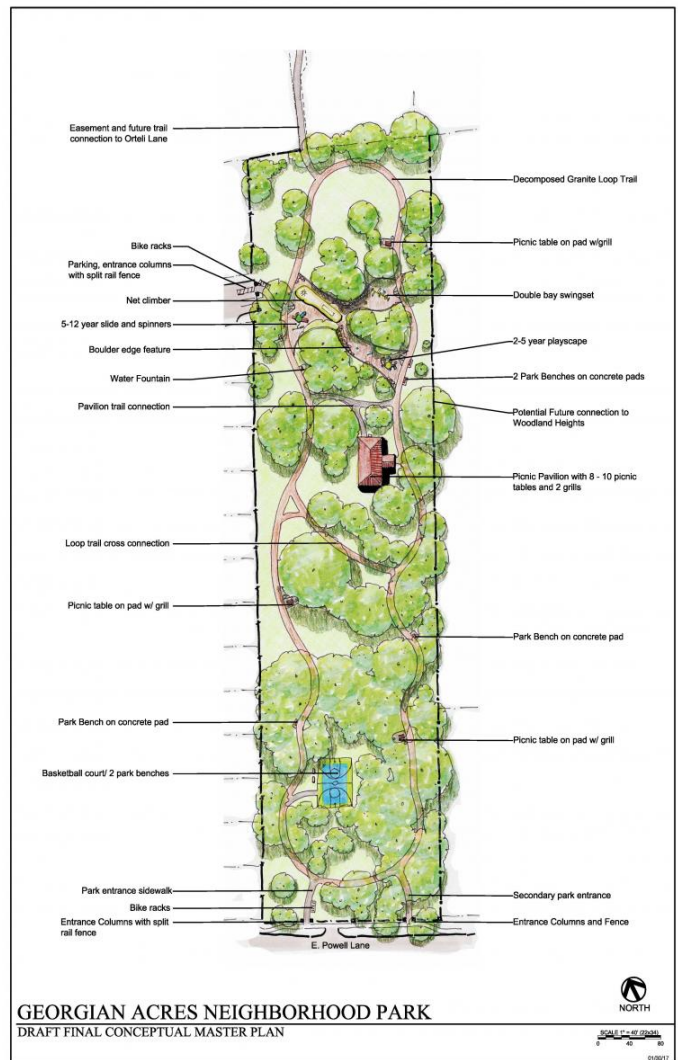
**Georgian Acres Neighborhood Park**

Located at 500 East Powell Lane, Georgian Acres Neighborhood Park has been developed through a collaboration between the City of Austin and partners to fill a recreation gap in the community. The goals of Austin’s Parks and Recreation Department for designing this park include:

- Respond to the needs of the neighborhood, including opportunities for multiple cultures and age groups to connect;
- Preserve the beautiful, mature trees;
- Create a sustainable green space; and
- Provide opportunities for people to meet their neighbors and bring community together.

The park planning process was conducted in partnership with the District 4 Council Office, the area neighborhood association, and community leaders. After working with the community through a series of public engagement activities held in 2016, the site plans for the park were approved by City of Austin Development Services. Park construction began in September 2019 and is anticipated to be complete in summer 2020. Georgian Acres Neighborhood Park is set in a long, linear, 5-acre, wooded area and will feature:

- Granite loop trail
- Youth playscape
- Net climber
- Tot playscape
- Swings
- Picnic shelter with picnic tables and grills
- Standalone picnic tables
- Benches
- Water fountain
- Bike racks
- Basketball court



## Budget

Georgian Acres Neighborhood Park has been funded through multiple sources including the City of Austin's general fund, parkland development fees, Austin Park Foundation funding, an Austin Parks Foundation Impact Grant, a Dell Match Play grant, and funding from developers JCI and Artisua.

The AIPP 2% for this project is generated from 2018 City of Austin parkland acquisition. The total award for the artist contract is **\$34,000**, inclusive of design, fabrication, and installation, including engineering and permitting fees, travel and shipping expenses, insurance, and other project-related costs.

## Public Art Goals & Priorities

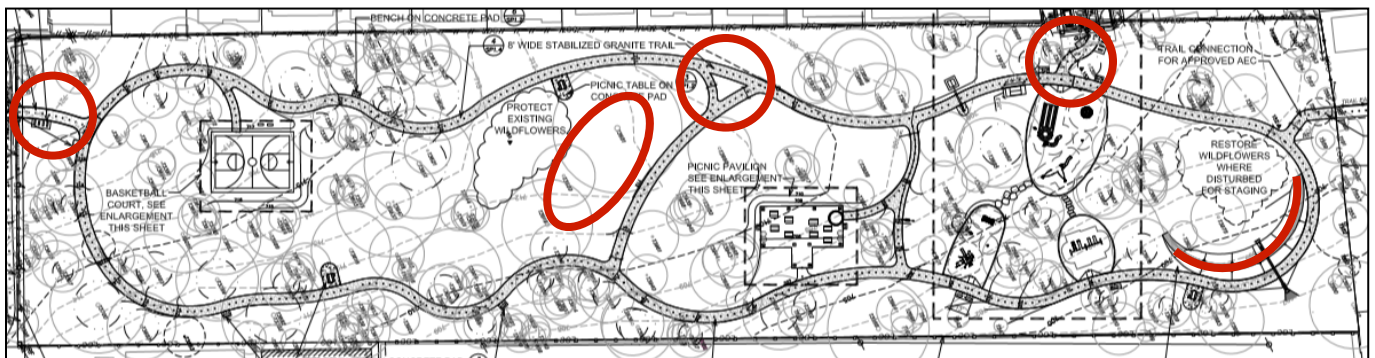
The AIPP program seeks to commission works of art of redeeming quality that advance public understanding of visual art and enhance the aesthetic quality of public places. This can be accomplished through the selection of a qualified artist or artist team who can innovatively and thoughtfully design within the context of this project.

To help ensure the engagement of diverse, local voices, AIPP collaborated with Georgian Acres community members to outline aims for the artwork. The resulting goals for the AIPP Georgian Acres Neighborhood Park project are:

- Represent and connect the diverse cultures of the neighborhood;
- Respect and integrate into the natural environment of the park;
- Inspire curiosity and imagination in a visually appealing way;
- Be safe, easily maintained, and vandal-resistant in an exterior environment; and
- Contribute to the depth/breadth of the City of Austin's public art collection.

## Artwork Opportunity

The community has stated a strong preference for artwork that is representative of the neighborhood's diverse cultural heritage and that serves to visually enhance this new community space. Additionally, this public art opportunity should embrace and empower the creativity of the people in the neighborhood. Artists familiar with the Georgian Acres community and/or who are intimately connected to the history and heritage of the area are highly encouraged to apply. Multilingual artists and/or artists able to interact with the community in languages other than English are also encouraged to apply. The proposed artwork should be integrated into the space of the park. Potential artwork locations are designated on the plan drawing below. The final artwork site will be determined in collaboration between the selected artist, City staff, and the neighborhood.



*Possible artwork location in Georgian Acres Neighborhood Park*

## Artist Information Meeting

To ensure information about the project is available to all interested artists, an artist information meeting will be held during the open application period. The purpose of the meeting is to further explain the parameters of the project and outline the application procedures. The meeting will include discussion of possible locations and opportunities for artwork. AIPP staff and project representatives will be available to answer questions. The presented materials, a recording of the presentation will be posted to City's website after the meeting: [www.austintexas.gov/department/aipp-opportunities](http://www.austintexas.gov/department/aipp-opportunities).

**PLEASE NOTE: Due to COVID-19 restrictions (current at the time of this call's release), the artist information meeting(s) for this project will likely be held virtually. Visit the link above for the most current information.**

## Artist Eligibility

Applicants should meet the following requirements:

- Professional visual artist, or artist team;
- At least 18 years of age; and
- Live in the 7-county Austin metropolitan area (Williamson, Travis, Bastrop, Caldwell, Hays, Burnet, and Blanco counties).

Full-time, permanent City of Austin employees are ineligible to apply. Employees of the project consultants and sub-consultants are also ineligible to apply. Artists who are under an active contract with the Art in Public Places program at the time of application are ineligible to apply. Only one application per artist or artist team will be accepted (an artist may not apply as an individual and as a team member separately).

Applications not meeting all eligibility criteria will be withdrawn from consideration.

## Submission Requirements

**Applications must be received online via [www.PublicArtist.org](http://www.PublicArtist.org) no later than 5:00 pm (CST) on Thursday, August 6, 2020.** For technical assistance with your application, please contact [info@publicartist.org](mailto:info@publicartist.org) or 210-701-0775 (9:00 am – 5:00 pm).



Applications include:

1. A resume or CV (3 pages max)
2. 10 images of completed relevant artwork with the required information
  - a. Required information per image: Title, Location, Dimensions, Date, Media, Budget, and Description
  - b. If you are including an image of an artwork that was created with others, please explain your role in the project in the image's Description field.
  - c. Including multiple images/views of a single artwork is acceptable.
3. 3 professional references
  - a. Please provide contact information for each professional reference (email and/or phone number).
  - b. Do not submit letters of reference.
4. 4 short answer responses (100 word min / 200 word max each)
  - a. Why are you interested in working on the Georgian Acres Neighborhood Park public art project? What about this project excites you? Please be descriptive.
  - b. The Georgian Acres community is very diverse! The area has a high immigrant population, is multi-lingual (largely Spanish speaking), and is home to a large number of children. Please describe how you personally connect to Georgian Acres as an artist. For example: Do you have lived experience with this community or a similar community? Are you familiar with the history or heritage of Geor-



gian Acres? Do you speak a language other than English and/or are you interested in engaging with a community that is multi-lingual (largely Spanish speaking)? Have you engaged with people of diverse age groups--from children and adolescents to adults and seniors? Please answer as you feel comfortable. Please be descriptive.

- c. Through your artistic practice, how might you connect the people of Georgian Acres to one another or connect the community to the park? Can you share an example of a previous artwork or an experience that could illustrate this? Please be descriptive.
  - d. Have you previously worked with communities or civic/social practice in your art practice? If so, how would those past experiences inform your approach to the Georgian Acres Neighborhood Park project? If not, what other abilities, talents, or experiences would you utilize to engage the community? Please be descriptive.
5. A completed demographic survey
- a. Note that you are given the option to “not disclose” your information on each question.

## Selection Criteria

The selection of an artist or artist team shall be based on artist qualifications that best meet the requirements contained in this Project Prospectus. The selection jury will review and consider the following evaluation criteria:

- » Artistic merit and technical expertise;
- » Ability to engage the community in which the artwork is being proposed; and
- » Demonstrated success completing works of art.

For more information on AIPP project selection criteria, see:

[http://www.austintexas.gov/sites/default/files/files/aipp\\_selection\\_criteria.pdf](http://www.austintexas.gov/sites/default/files/files/aipp_selection_criteria.pdf)

## Selection Process

A Request for Qualifications (RFQ) will be distributed and applications must be submitted through PublicArtist.org by the deadline. The City of Austin Art in Public Places Panel will convene a selection jury to evaluate the submissions. The selection jury and advisors will review qualifications and select three to five finalists for interviews *unless there is consensus on the selection of recommending one applicant and one alternate*. The selection jury and advisors will then convene for interviews and select one artist/artist team and one alternate. This recommendation will be presented to the Art in Public Places Panel and Austin Arts Commission for approval. The approved artist(s) will be put under a design + commission contract to coordinate with the City and project team to develop a final design, which is also subject to approval by the AIPP Panel and the Austin Arts Commission prior to fabrication and installation.

## Selection Jury & Project Advisors

A 3-member selection jury shall be chosen to include at least 1 visual artist. Possible selection jurors include:

- » Mery Godigna Collet, Artist
- » Michael Anthony García, Artist
- » Brian “Bydeeman” Joseph, Artist
- » Wura-Natasha Ogunji, Artist
- » Betelhem Makonnen, Artist
- » Paloma Mayorga, Artist
- » Arleen Polite, Artist
- » Polly Thurston, Community Member / Artist / Senior UX Designer, Mighty Citizen
- » Devanne Pena, Architect, Page Southerland Page

- » Trinity White, Architect, Trinity White Architecture
- » Wenjie Zhao, Landscape Architect / Designer, Asakura Robinson

Project advisors will be invited to participate in the process to provide assistance and expertise to the selection jury. The project advisors to the jury may include:

- » D’Anne Williams – Project Manager, Parks and Recreation Department, City of Austin
- » Polly Thurston – Georgian Acres Neighborhood Association
- » Jenny Black – Georgian Acres Neighborhood Association
- » Jacob Villanueva – AIPP Panel Liaison
- » Brett Barnes– Austin Arts Commission, District 4

The Project Team will be advised by:

- » Sue Lambe, AIPP Program Manager, Cultural Arts Division, Economic Development Department, City of Austin
- » Alex Irrera, AIPP Project/Collection Manager, Cultural Arts Division, Economic Development Department, City of Austin

No gallery owner, dealer, or art agent may serve as a juror due to the potential for conflict of interest. No juror may serve more than once in any two-year period in an attempt to bring a diversity of interests to the selection process and to more precisely match the expertise of the jury members to each project.

## Commitment to Equity

Art in Public Places embraces cultural equity. It is the goal of the program to ensure as many people as possible have meaningful engagements with public art and access to viewing, experiencing, and creating artwork.

AIPP actively seeks to provide members of historically underrepresented communities with equitable access to public art opportunities. These communities may include identities such as:

- Black or African-American;
- Arab-American;
- Asian-American;
- Hispanic or LatinX;
- Pacific Islander;
- Indigenous Nations;
- LGBTQIA; or
- a person with a disability.

In support of this commitment, the program will make every effort to expand access to the collection and programmatic decision-making. *For each project, every effort will be made to comprise project selection juries and finalist pools for AIPP commissions with representatives from a variety of historically underrepresented communities to better reflect the diversity of Austin.*

## Tentative Schedule (Subject to Change)

### 2020

|           |   |
|-----------|---|
| April     | Request for Qualifications (RFQ) released   |
| May       | Artist information meeting  |
| June      | Park construction complete / park opens   |
| August    | RFQ closes<br>Selection jury review of applications   |
| September | Artist interviews   |
| October   | Approval of artist and alternate by AIPP Panel and Austin Arts Commission<br>Artist design + commission contract executed |
| November  | AIPP kick-off meeting   |
| December  | Artist community engagement   |

### 2021

|           |  |
|-----------|--|
| Jan – Feb | Artist community engagement (continued)                      |
| March     | Mid-Design review by AIPP Panel                              |
| May       | Final Design review by AIPP Panel and Austin Arts Commission |
| Jun – Aug | Artwork fabrication  |
| September | Installation   |
| October   | Dedication   |

## Contact/Questions

**Alex Irrera** | Art in Public Places Project & Collection Manager

[alex.irrera@austintexas.gov](mailto:alex.irrera@austintexas.gov)

Direct: 512.974.7860 | Main: 512.974.7700

Mailing Address: City of Austin, Economic Development Department,  
ATT: Alex Irrera, P.O Box 1088, Austin, Texas 78767-1088



**Works Cited:**

City of Austin. (2010). *The North Lamar Combined Neighborhood Planning Area Neighborhood Plan: An Amendment to the Austin Tomorrow Comprehensive Plan*. Author.

<https://www.google.com/url?sa=t&rct=j&q=&esrc=s&source=web&cd=1&cad=rja&uact=8&ved=2ahUKEwi6hfmzt-PnAhUIQK0KHfl-ClwQFjAAegQIChAB&url=ftp%3A%2F%2Fftp.ci.austin.tx.us%2Fnpzd%2FAustingo%2Flamar-combined-np.pdf&usg=AOvVaw1DYrBpWtI4vyKBrQUtyCP5>

City of Austin (2014-2018). *American Community Survey Profile Report, 2014-2018, Census Tract 18.06, Travis County, Texas (14000US48453001806)*. Author.

Temprano, V. (2019). *Native Land (Version 2.7)* [Mobile application software]. Retrieved from <https://play.google.com/store/apps/details?id=ca.nativeland.NativeLand&hl=en>