

**HISTORIC  
HEART AND SOUL  
PARK**

for  
WEST PALM BEACH  
COMMUNITY  
REDEVELOPMENT AGENCY

821 N ROSEMARY AVE  
WEST PALM BEACH,  
FLORIDA 33401

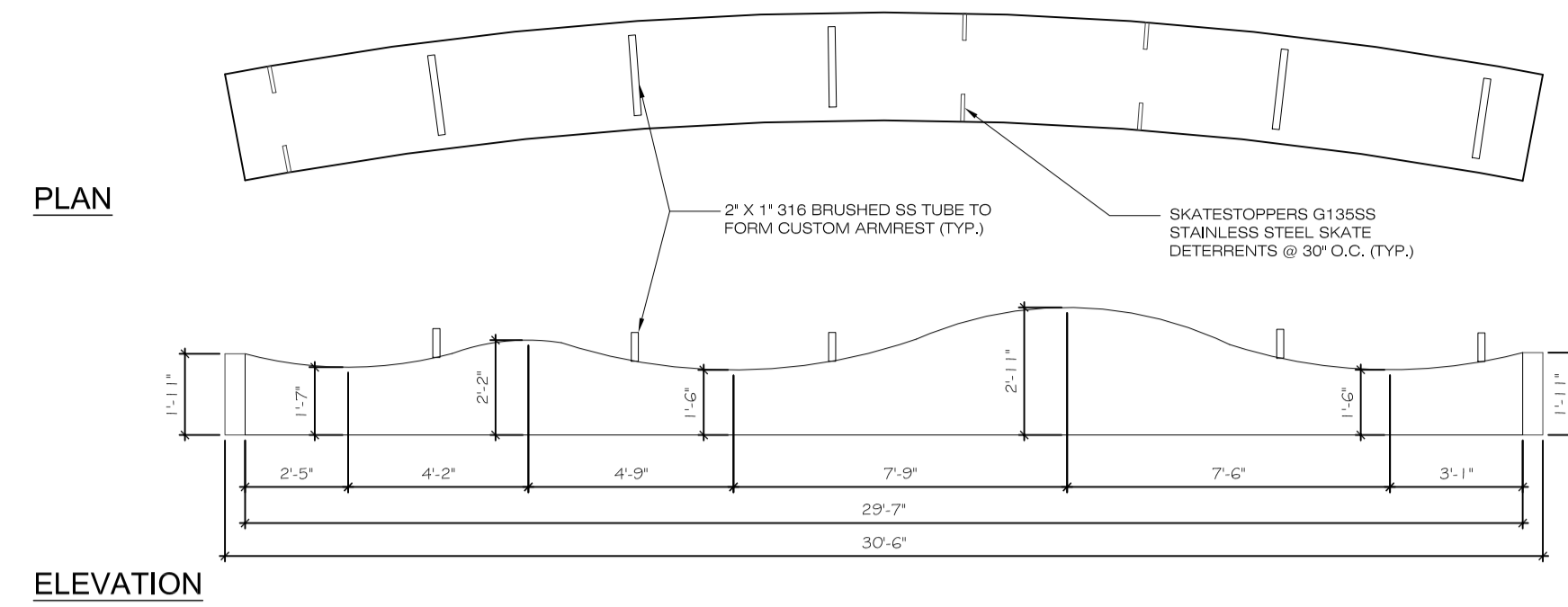
**ISSUE**  
100% CONST. DOCS.  
PERMIT  
01/10/2020

MARK	DATE	DESCRIPTION
	06/12/18	SITE PLAN REVIEW APPL
	11/30/18	SITE PLAN REVW. RESP.
	03/29/19	SITE PLAN RVW. RESP.2
	09/29/19	90% PROGRESS DWGS
	12/11/19	SITE PLAN RVW. RESP.3
	01/10/20	PERMIT (100% CDS)
△	03/09/20	RESP. TO PERMIT COMS.

PROJECT NO: 17-021  
DRAWN BY: J.FLOWERS  
CHECKED BY: J.FLOWERS / Z.BROWN

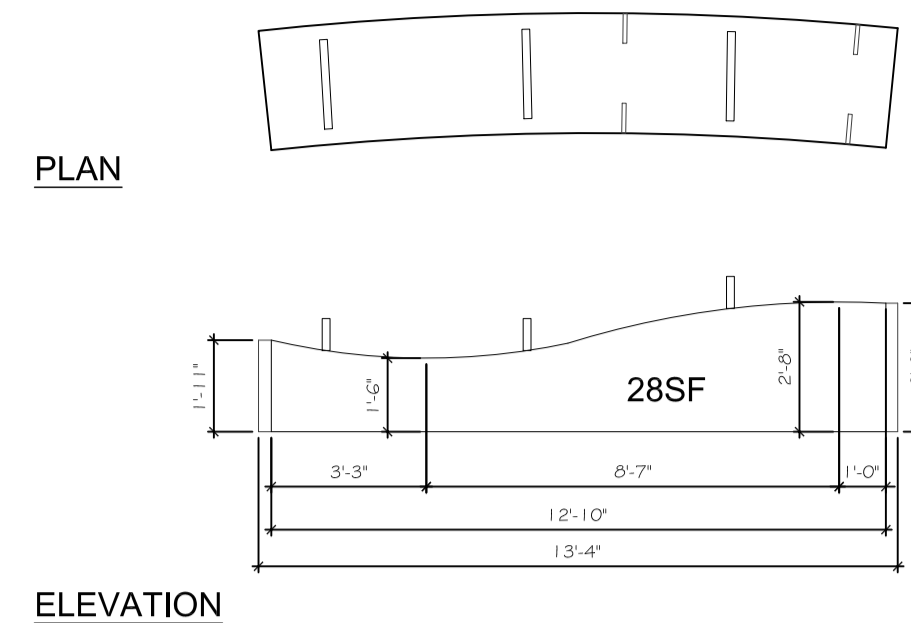
**SHEET TITLE**  
**SEAT WALLS  
DETAILS**

**SHEET NUMBER**  
**SP302**



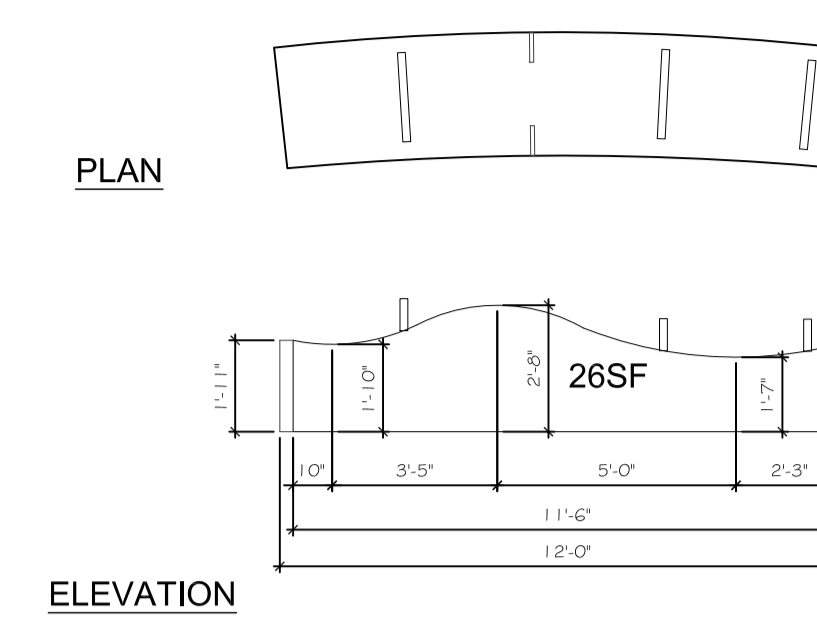
Top Surface Area: Approx. 74 SF  
Long Sides Surface Area: Approx. 58 SF each, x2 = 116 SF  
Short Sides/Ends Surface Area: Left Approx. 2.75 SF, Right Approx. 2.75 SF  
Total Surface Area = 195 SF

**B1**



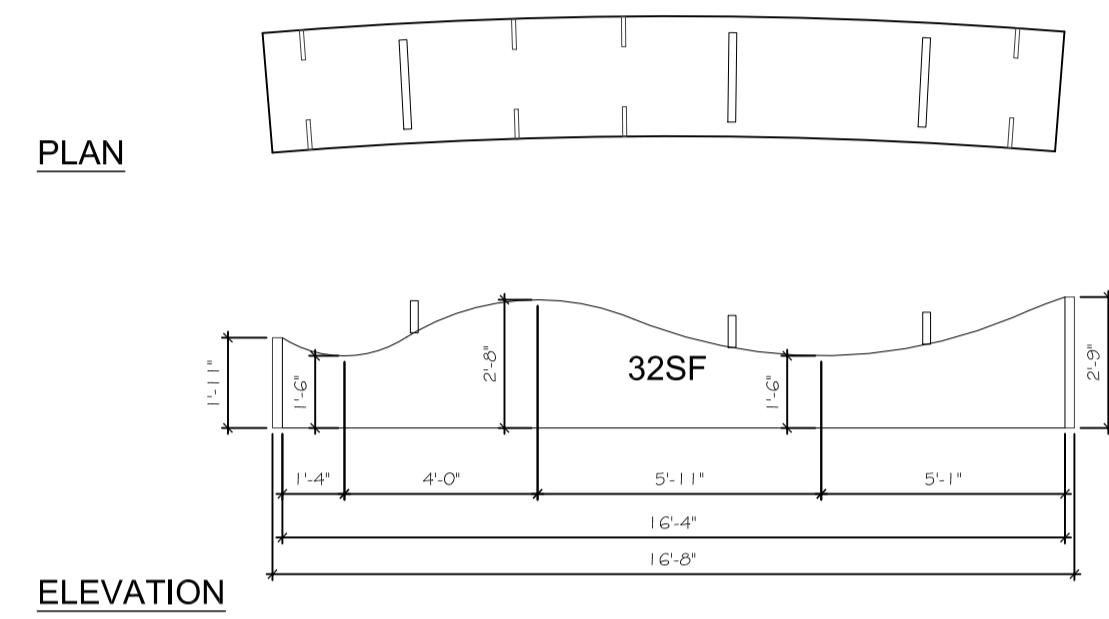
Top Surface Area: Approx. 32 SF  
Long Sides Surface Area: Approx. 26 SF each, x2 = 52 SF  
Short Sides/Ends Surface Area: Left Approx. 2.75 SF, Right Approx. 4 SF  
Total Surface Area = 90 SF

**B4**



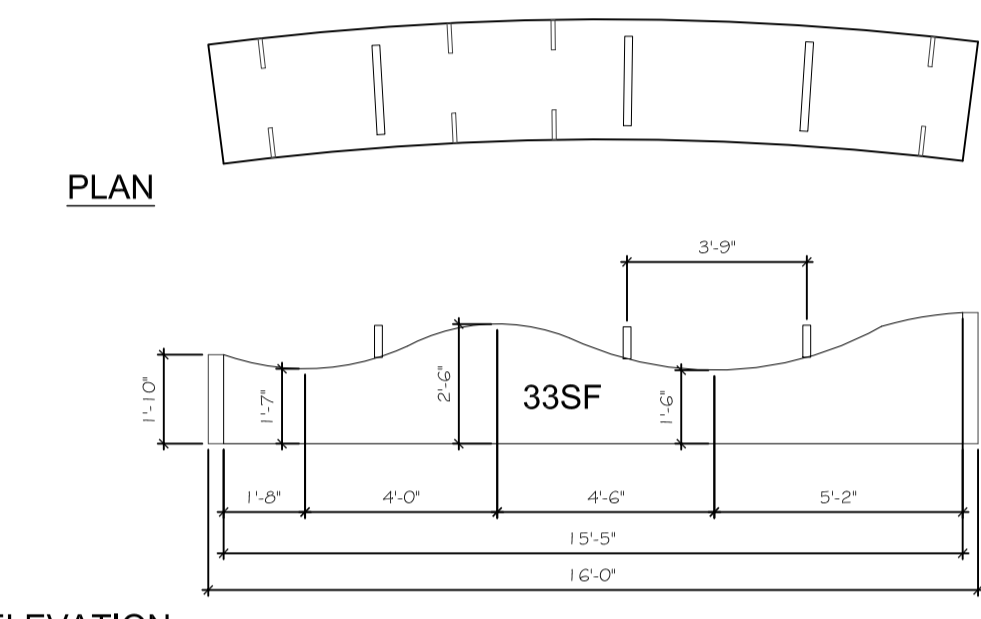
Top Surface Area: Approx. 29 SF  
Long Sides Surface Area: Approx. 22 SF each, x2 = 44 SF  
Short Sides/Ends Surface Area: Left Approx. 2.75 SF, Right Approx. 2.75 SF  
Total Surface Area = 78 SF

**B7**



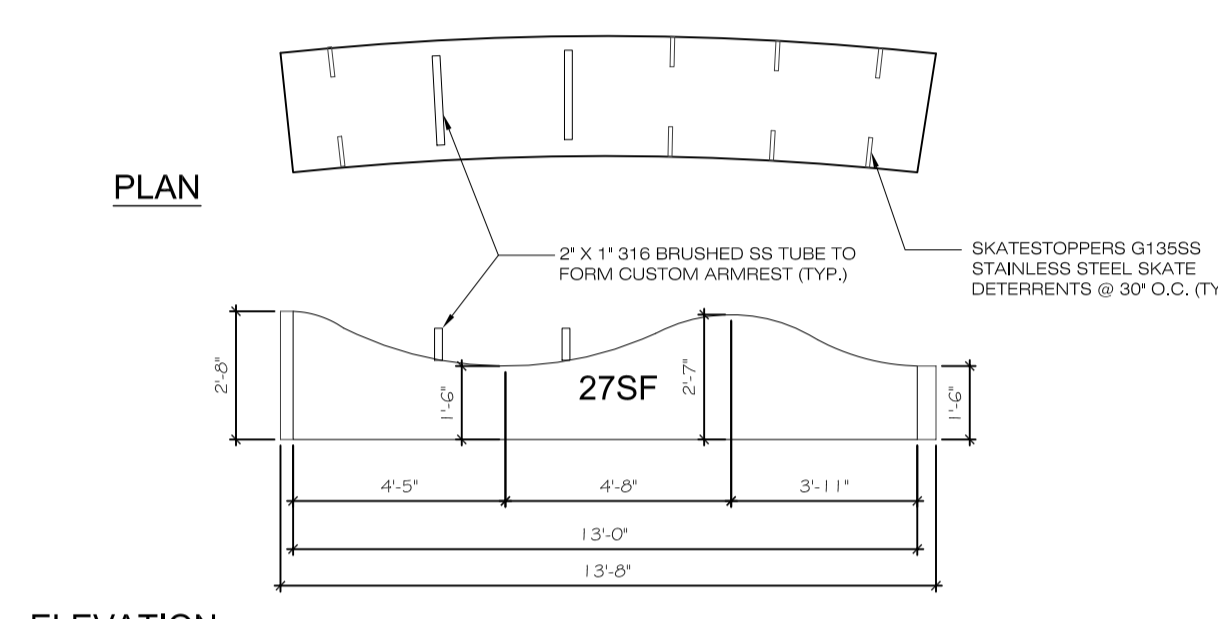
Top Surface Area: Approx. 38 SF  
Long Sides Surface Area: Approx. 32 SF each, x2 = 64 SF  
Short Sides/Ends Surface Area: Left Approx. 2.75 SF, Right Approx. 4 SF  
Total Surface Area = 108 SF

**B2**



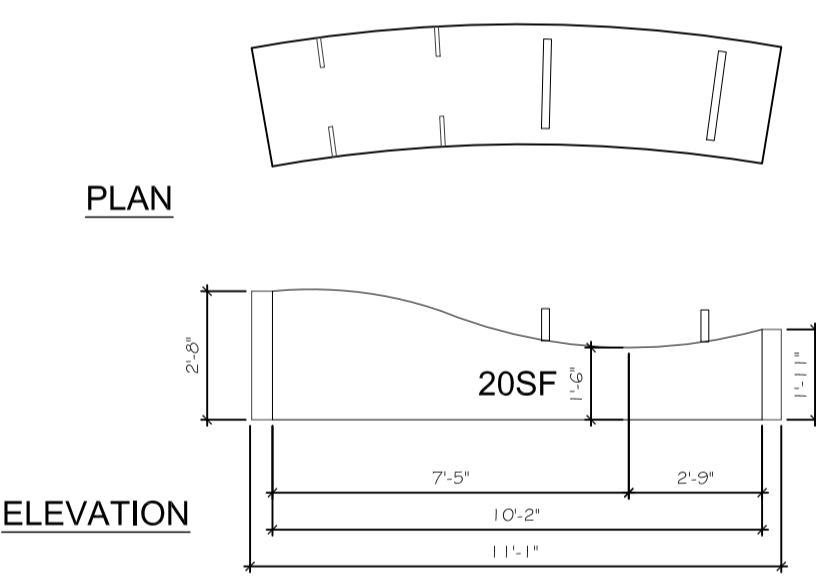
Top Surface Area: Approx. 39 SF  
Long Sides Surface Area: Approx. 30 SF each, x2 = 60 SF  
Short Sides/Ends Surface Area: Left Approx. 2.75 SF, Right Approx. 4 SF  
Total Surface Area = 105 SF

**B5**



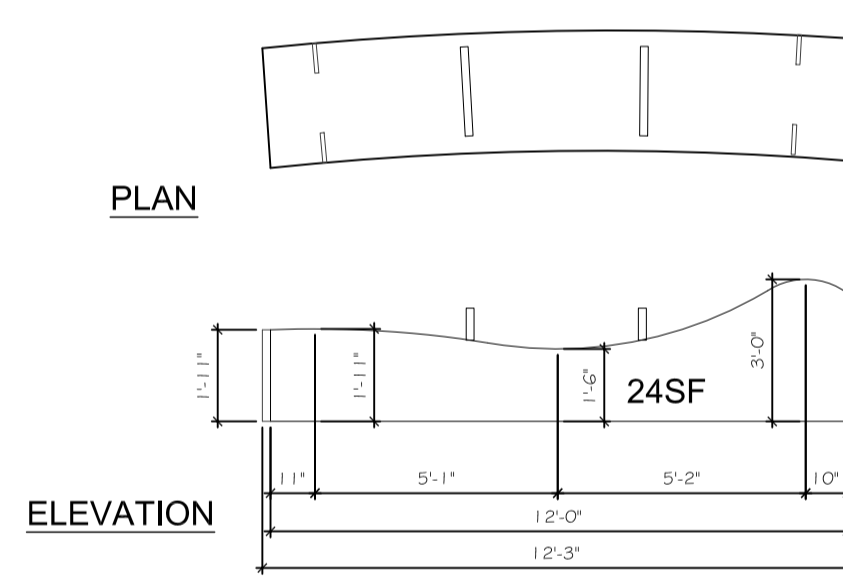
Top Surface Area: Approx. 33 SF  
Long Sides Surface Area: Approx. 26 SF each, x2 = 52 SF  
Short Sides/Ends Surface Area: Left Approx. 4 SF, Right Approx. 2.75 SF  
Total Surface Area = 91 SF

**B8**



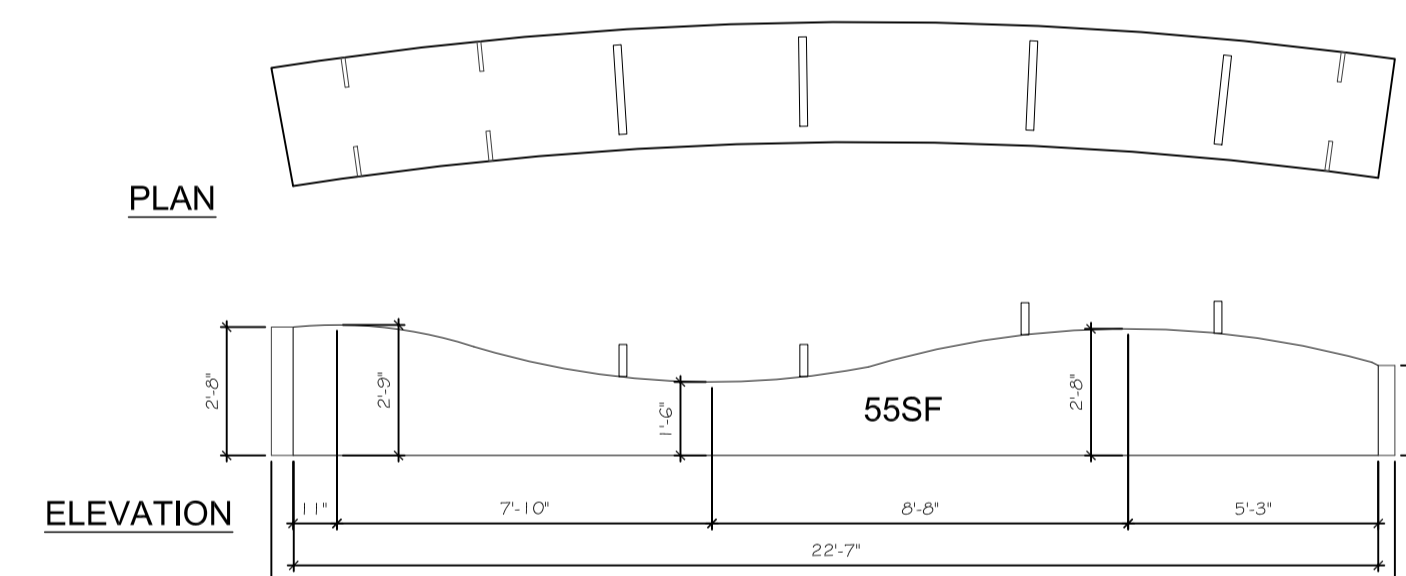
Top Surface Area: Approx. 26 SF  
Long Sides Surface Area: Approx. 20 SF each, x2 = 40 SF  
Short Sides/Ends Surface Area: Left Approx. 4 SF, Right Approx. 2.75 SF  
Total Surface Area = 487 SF

**B3**



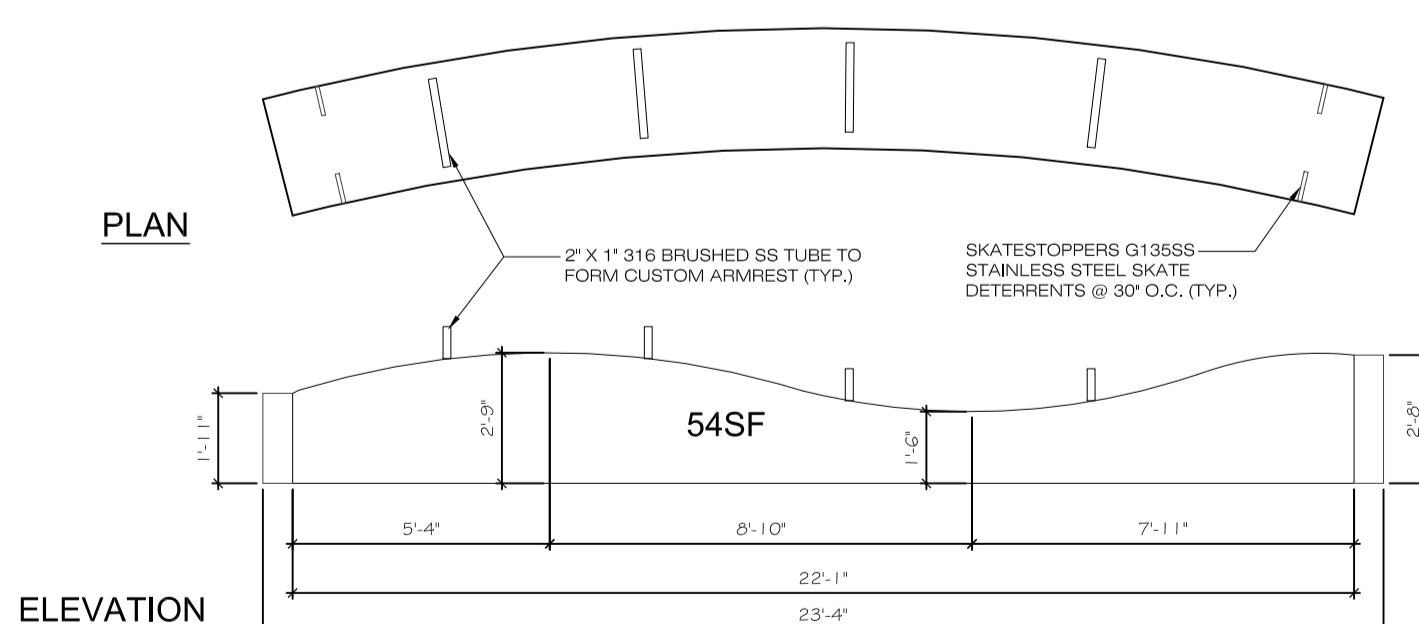
Top Surface Area: Approx. 30 SF  
Long Sides Surface Area: Approx. 23 SF each, x2 = 46 SF  
Short Sides/Ends Surface Area: Left Approx. 2.75 SF, Right Approx. 4 SF  
Total Surface Area = 83 SF

**B6**



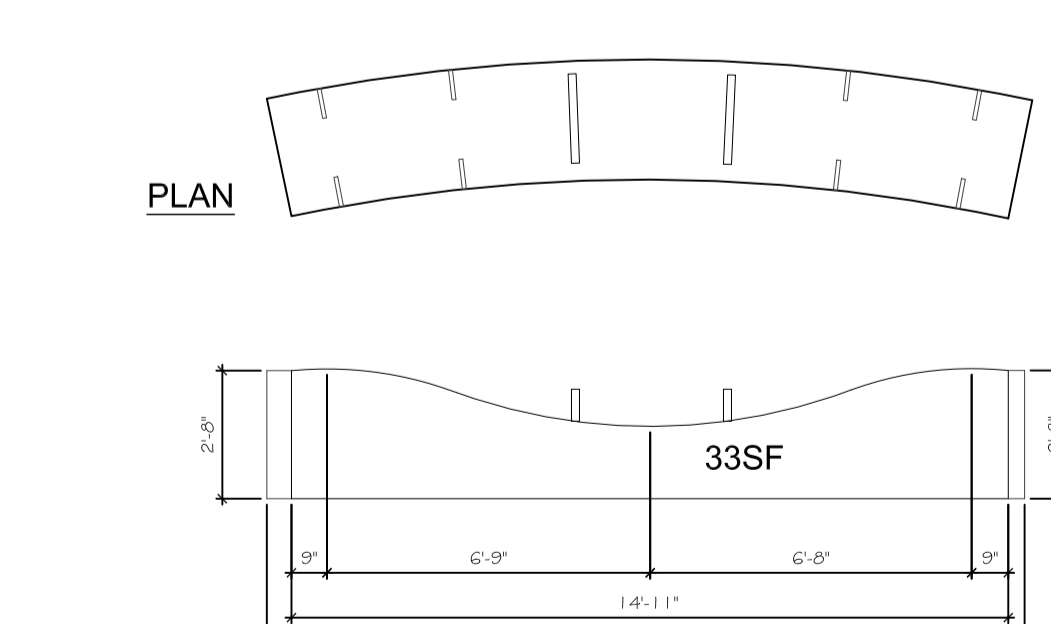
Top Surface Area: Approx. 57 SF  
Long Sides Surface Area: Approx. 49 SF each, x2 = 98 SF  
Short Sides/Ends Surface Area: Left Approx. 4 SF, Right Approx. 2.75 SF  
Total Surface Area = 161 SF

**B9**



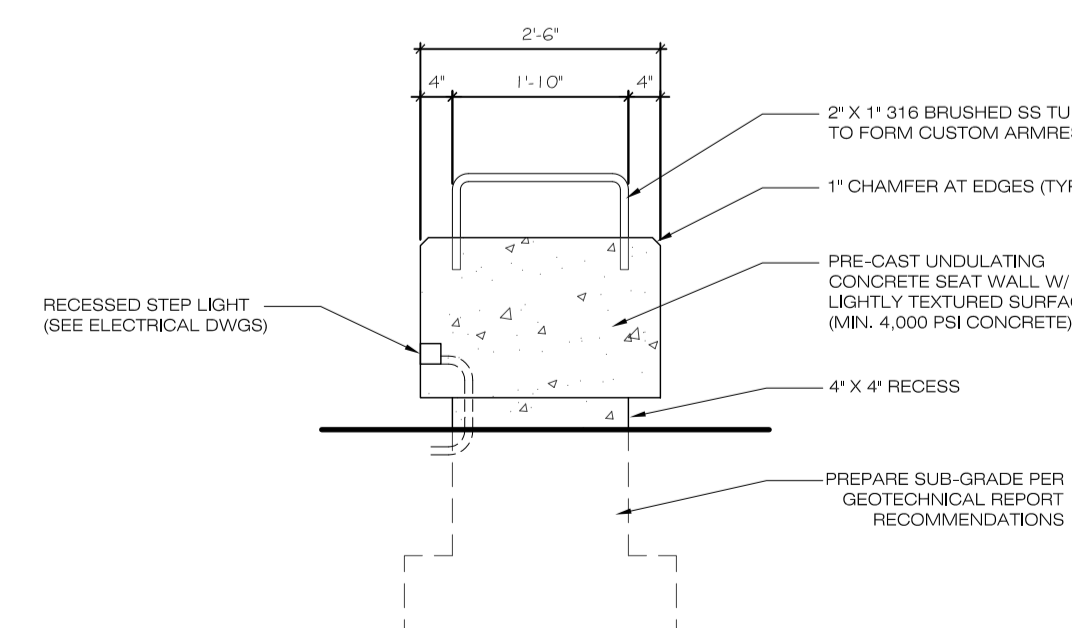
Top Surface Area: Approx. 57 SF  
Long Sides Surface Area: Approx. 48 SF each, x2 = 96 SF  
Short Sides/Ends Surface Area: Left Approx. 2.75 SF, Right Approx. 4 SF  
Total Surface Area = 159 SF

**B10**



Top Surface Area: Approx. 38 SF  
Long Sides Surface Area: Approx. 31 SF each, x2 = 62 SF  
Short Sides/Ends Surface Area: Left Approx. 4 SF, Right Approx. 4 SF  
Total Surface Area = 108 SF

**B11**



**2** TYPICAL SECTION DETAIL  
SCALE: 1/2"=1'-0"

- SEAT-WALLS NOTES:**
1. PRECAST CONCRETE SEATWALLS OF MINIMUM 4,000 PSI CONCRETE.
  2. G.C. TO PROVIDE SIGNED & SEALED SHOP DRAWINGS AND CALCULATIONS BY DELEGATED ENGINEER FOR REVIEW.
  3. PROVIDE FOUNDATION TO COMPLY WITH GEOTECHNICAL REPORT RECOMMENDATIONS.
  4. ALL SEAT WALLS SHALL HAVE ATTACHED CUSTOM STAINLESS STEEL ARMRESTS AND STAINLESS STEEL SKATE DETERRENTS AS SHOWN. SEE DETAILS.
  5. PROVIDE 1" CHAMFER AROUND EDGES
  6. G.C. TO PROVIDE A MOCK-UP / EXAMPLE OF WALL/BENCH FOR ARCHITECT REVIEW PRIOR TO PROCEEDING WITH FABRICATION OF ALL WALLS.
  7. G.C. TO COORDINATE WITH SELECTED ARTIST RESPONSIBLE FOR FINISH TO BE INSTALLED OVER WALLS (NOTE: ART INSTALLATION MAY OCCUR AFTER COMPLETION OF PROJECT).

**CITY OF WEST PALM BEACH  
DEVELOPMENT SERVICES DEPARTMENT**

**PROPOSED INTERIOR ART WALLS/BENCHES - CONCEPTUAL PLANS AND ELEVATIONS**  
SCALE: 1/4"=1'-0"  
**20041157**  
**05/20/20**  
**OFFICIAL PERMIT RECORD**

(FOR REFERENCE ONLY - UNDER SEPARATE PERMIT)

© Design2Form. All rights reserved. The ideas and designs represented or indicated in these drawings and specifications are the sole property of Design2Form, whether the project for which they were created for is executed or not. They may not be reproduced, altered, distributed or used in any form or manner without the expressed written permission of Design2Form.