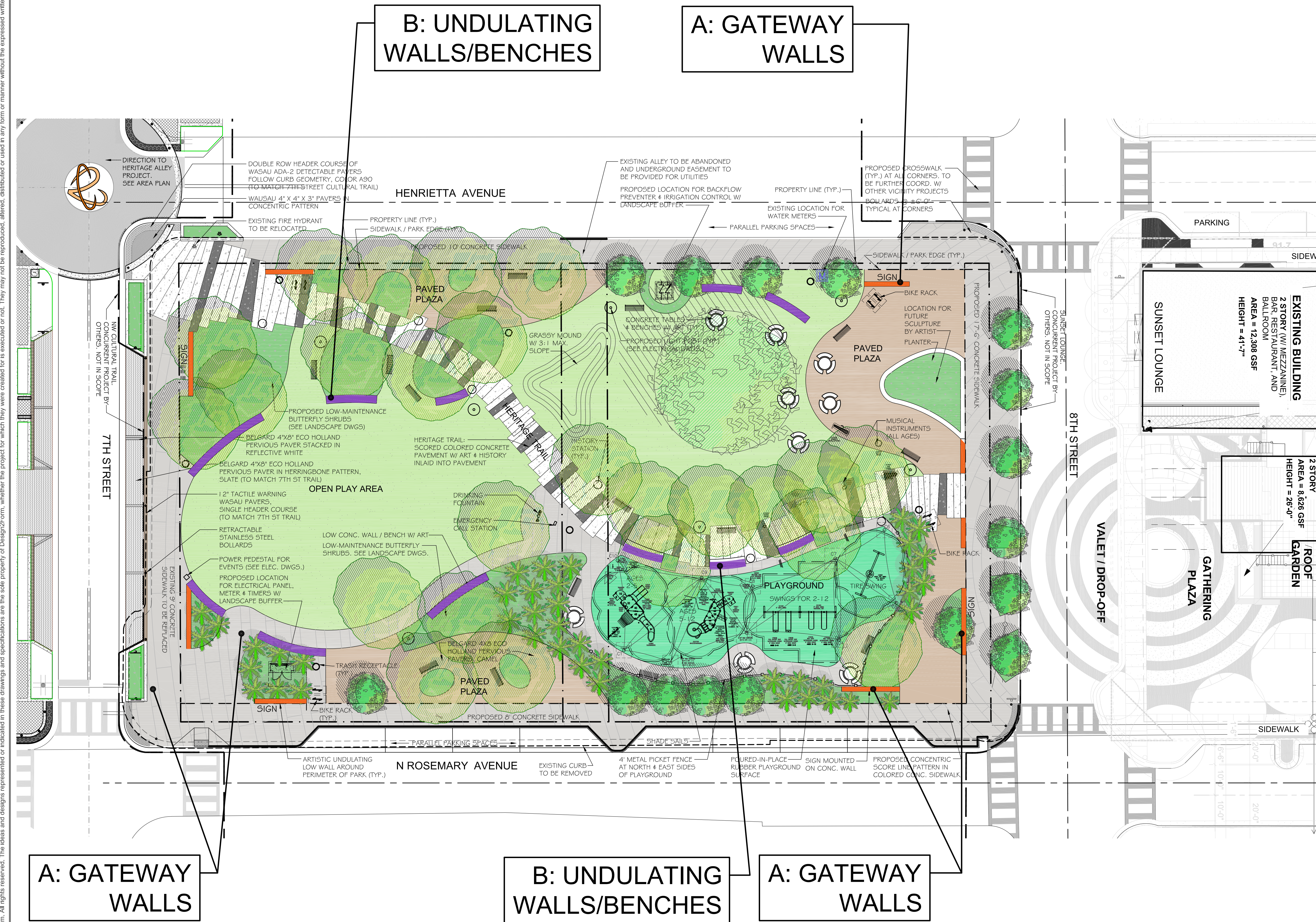


HISTORIC HEART & SOUL PARK

825 N ROSEMARY AVENUE, WEST PALM BEACH, FL

JANUARY 28, 2021

© Design2Form. All rights reserved. The ideas and designs represented or indicated in these drawings and specifications are the sole property of Design2Form, whether the project for which they were created for is executed or not. They may not be reproduced, altered, distributed or used in any form or manner without the expressed written permission of Design2Form.



PUBLIC ART ELEMENTS WITHIN THE HEART & SOUL PARK:

A. GATEWAY WALLS. CONCRETE WALLS WITH "GUARDIAN" SCULPTURAL FORMS AT EACH CORNER OF THE PARK. OPPORTUNITY FOR MOSAIC TILES OR OTHER MEDIUM. SEE DETAILS ON SHEET SP301. ESTIMATED SURFACE AREA = 1,120 S.F.

B. UNDULATING WALLS WITHIN PARK. SIMILAR TO THE GATEWAY WALLS WITH MOSAIC TILES OR SIMILAR. WILL OFTEN FORM BENCHES. SEE DETAILS ON SHEET SP302. ESTIMATED TOTAL SURFACE AREA = 1,340 S.F.

PROPOSED SITE PLAN SHOWING ART LOCATIONS
SCALE: 1/16" = 1'-0"