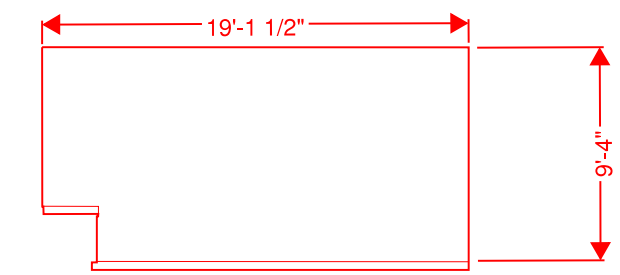
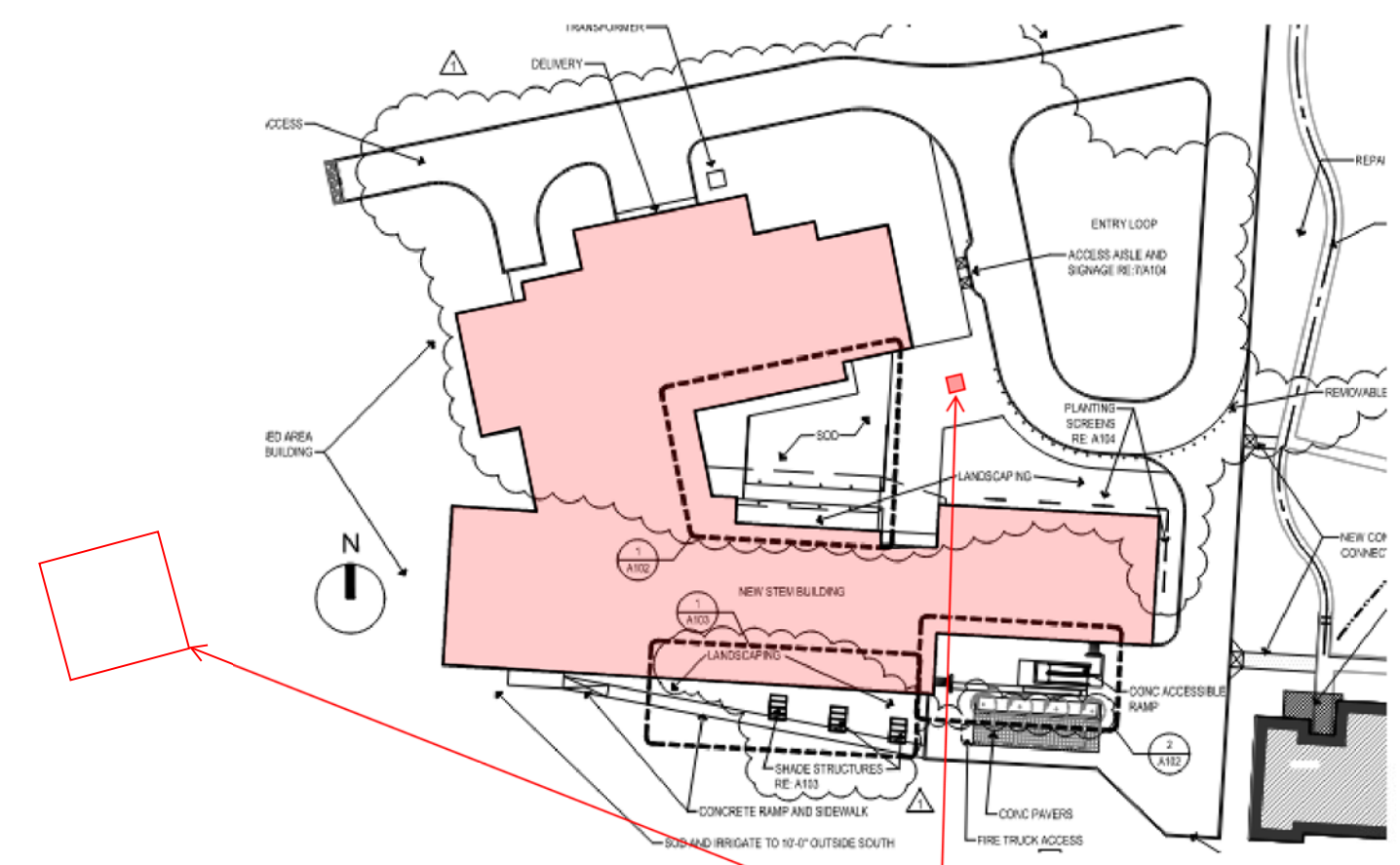


ELEVATION AT CORRIDOR 1C6



ELEVATION AT STUDENT BREAKROOM 110

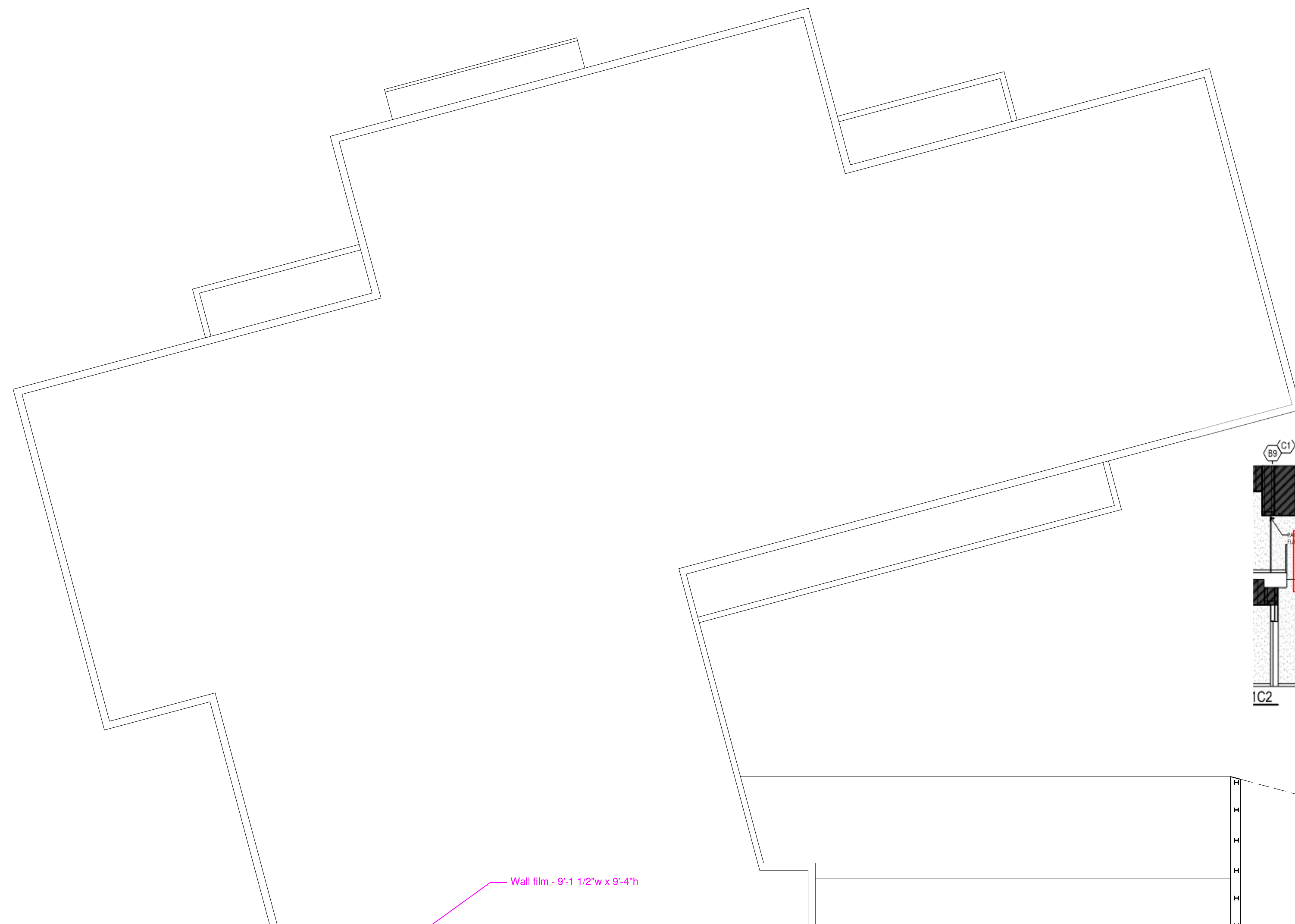
- Procured art - framed, photo, etc.
- Wall film



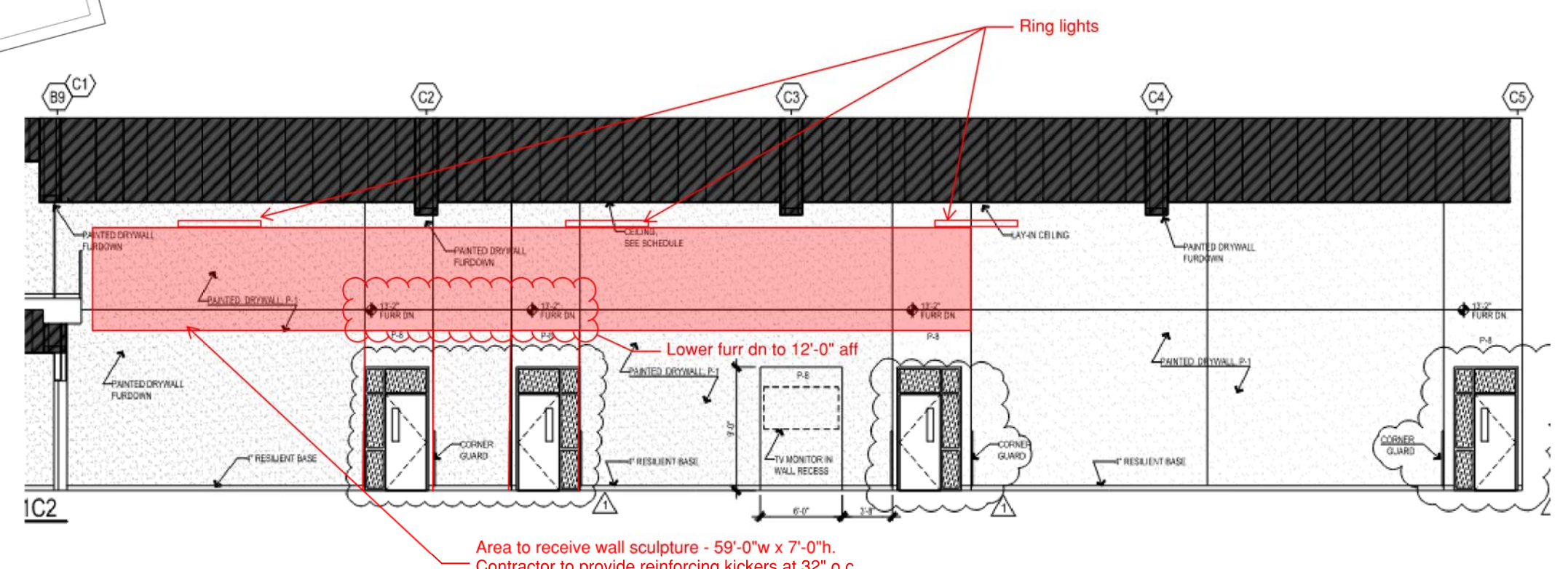
Large scale sculpture - assume 12'-0" to 14'-0" including square or round plinth. Note: plinth may double as seating area for student drop off/pick up.

Small sculpture. Assume 9'-0" h +/- including any plinth

FIRST FLOOR

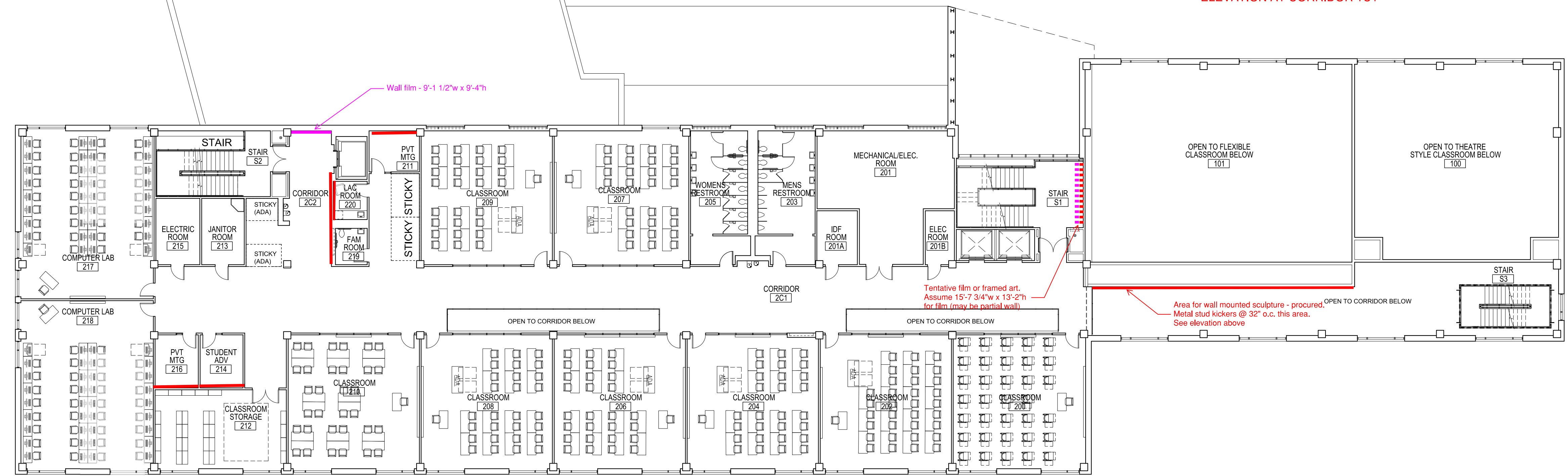


— Procured art - framed, photo, etc.
 — Wall film



Area to receive wall sculpture - 59'-0" w x 7'-0" h.
 Contractor to provide reinforcing kickers at 32" o.c.

ELEVATION AT CORRIDOR 1C1

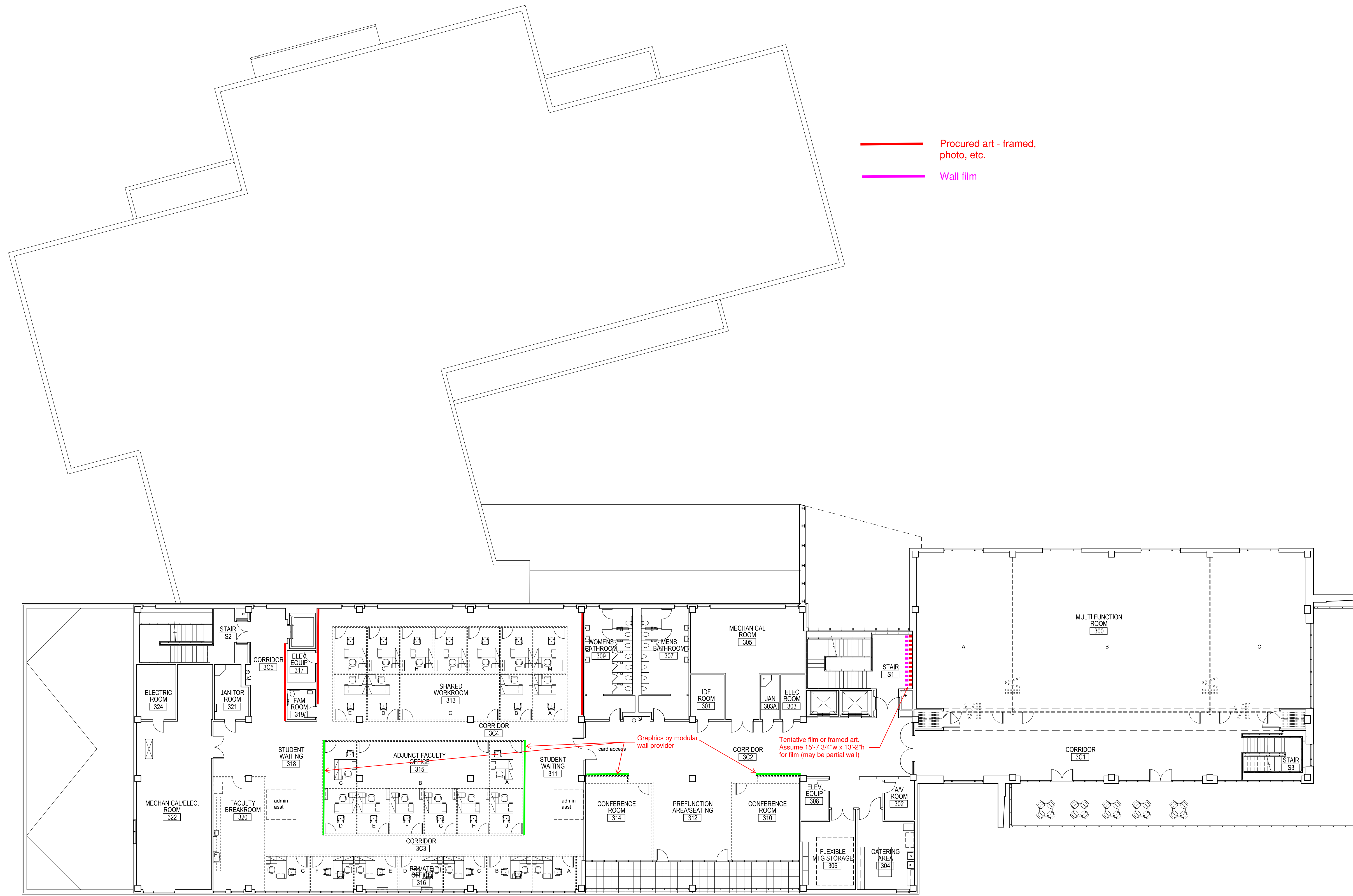


Wall film - 9'-1 1/2" w x 9'-4" h

Tentative film or framed art.
 Assume 15'-7 3/4" w x 13'-2" h
 for film (may be partial wall)

Area for wall mounted sculpture - procured.
 Metal stud kickers @ 32" o.c. this area.
 See elevation above

SECOND FLOOR



THIRD FLOOR