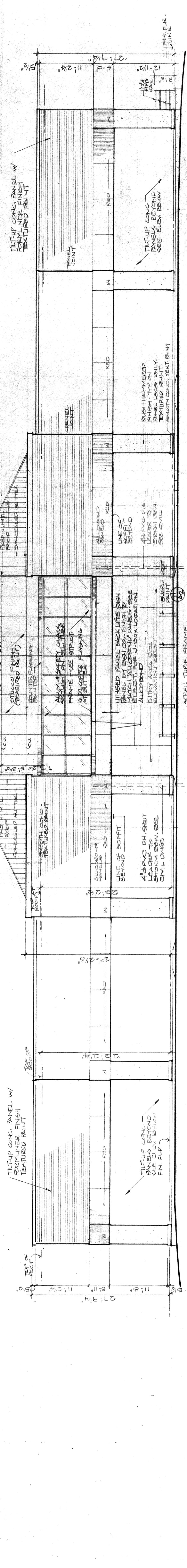


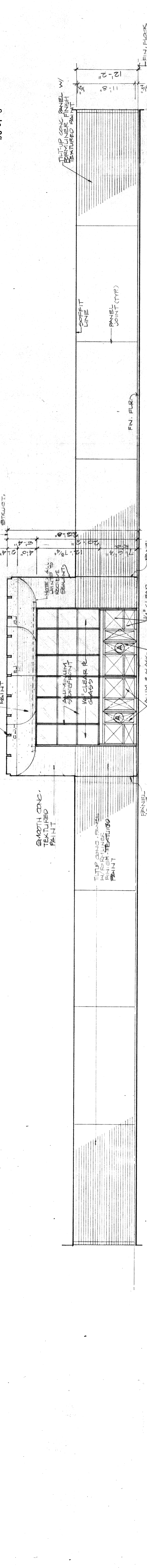
REVISIONS

**EXTERIOR COLOR SELECTIONS**  
 UPON RECEIPT OF SPECIFIED SAMPLES AND NECESSARY LABOR CONTRACTS, THE ARCHITECT SHALL PROVIDE A PAINTING AND COLOR SCHEDULE. NO COLORS OR PAINT SHALL BE ORDERED OR APPLIED WITHOUT THE ARCHITECT'S APPROVAL. ALL SPECIFIED SELECTIONS FROM THE ARCHITECT, AND AS APPROVED BY THE OWNER.

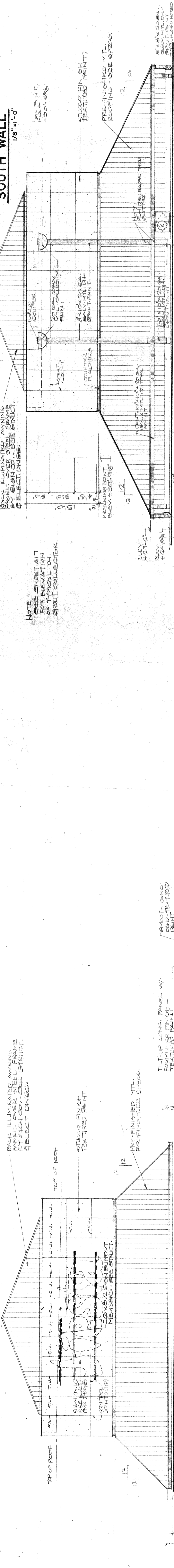
**PAINTING NOTE**  
 ALL EXPOSED MECHANICAL AND ELECTRICAL EQUIPMENT, PIPING, AND STRUCTURAL STEEL SHALL BE PAINTED TO MATCH ADJACENT WALLS PER SPECIFICATIONS.



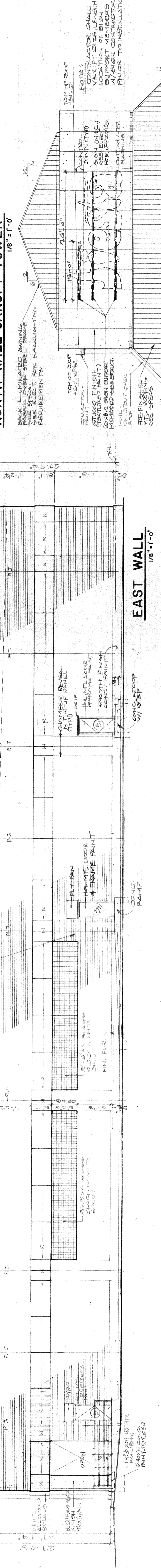
**SOUTH WALL**  
1/8"=1'-0"



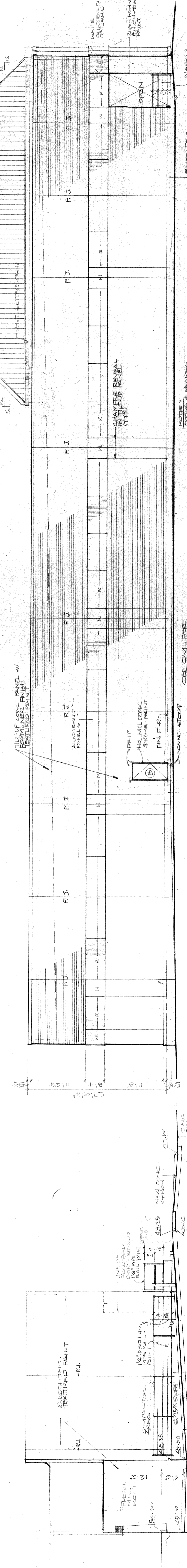
**INTERIOR SOUTH WALL**  
1/8"=1'-0"



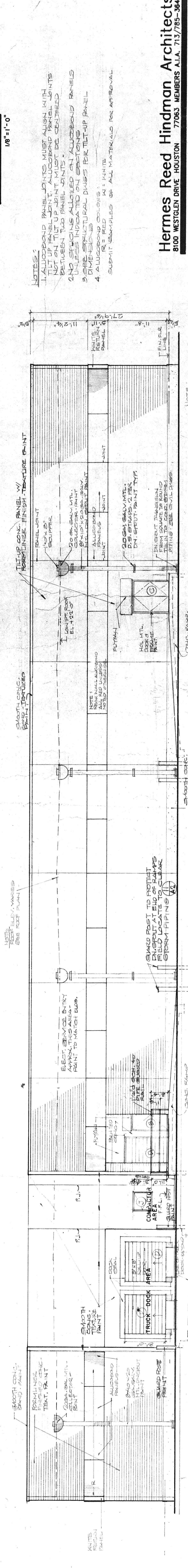
**NORTH WALL-CANOPY TOWER**  
1/8"=1'-0"



**EAST WALL**  
1/8"=1'-0"



**WEST WALL**  
1/8"=1'-0"



**NORTH WALL**  
1/8"=1'-0"

- NOTES:**
1. ALUMINUM PANEL JOINTS MUST ALIGN WITH JOINTS IN THE SUBSTRATE. CONCEAL PANEL JOINTS BETWEEN TWO PANEL UNITS. DO NOT USE JOINTS BETWEEN PANEL UNITS.
  2. NO SPOTS ALLOWED ON ALUMINUM PANELS.
  3. USE STRUCTURAL GLASS FOR TILT-UP PANELS.
  4. ALUMINUM PANELS TO BE APPROVED.

SAN JACINTO & WHEELER  
HOUSTON, TEXAS



DATE: 8.10.21  
 JOB NUMBER: 86085  
 H.H. DRAWN BY

A13  
16 OF 45

Hermes Reed Hindman Architects  
8108 WESTERN DRIVE, HOUSTON 77063, MEMBERS AIA: 713/785-3844