

CALL TO ARTIST/REQUEST FOR QUALIFICATIONS
- PUBLIC ART FOR
WAKE COUNTY PUBLIC HEALTH & HUMAN SERVICES CAMPUS



**Concept Rendering Health & Human
Services Campus**

DEADLINE FOR SUBMISSIONS
2:00PM(EST), Wednesday, June 22nd, 2022



County of Wake Facilities Design & Construction
Wake County Office Building, 11th Floor
P.O. Box 550
Raleigh, NC 27602

I. Call to Artist/Request for Qualifications for Public Art

Wake County seeks to commission a professional artist to create a site-specific exterior artwork to be placed at the New Wake County Public Health Building & Parking Deck as described below. The selected artist will contract directly with Wake County to successfully complete the full scope of the Projects within the projected budget and schedule.

In 2017, Wake County adopted a Public Art Administrative Policy. The intent of the policy is to enhance the aesthetic environment, expand public experience and exposure to culture through various art forms, enhance the appearance of public facilities and improve the environment of the county on behalf of its citizens, by the incorporation of art in the design and construction of various public facilities within the county. County capital improvement projects estimated to cost \$1 million or more that provide significant-general public access such as libraries, parks, and greenways shall be eligible for funding dedicated to the selection, purchase, fabrication and installation of works of public art. Other projects that may be eligible for funding include certain Human Services projects or other facilities that may be authorized by the Board of Commissioners.

This Request for Qualifications provides information on the scope of the project and information to aid in preparing responses. All inquiries regarding this Request for Qualifications must be in writing and must be submitted to the Project Manager listed below by the date identified in the Project timeline. To be considered, submissions must comply with the requirements outlined in this document. (**Refer to section V. Submission Requirements.**)

II. Scope of the Project

A. Purpose: Wake County seeks to commission a professional artist to create a site-specific exterior artwork to be placed at the New Wake County Public Health Building & Parking Deck.

B. Project Budget Range:

Range of \$150,000.00 up to \$250,000 (All inclusive – design and construction). This amount is inclusive of all costs associated with this public art project including, but not limited to, artist fees, other consultants' and subcontractors' fees, insurance conforming to Wake County standards, engineering, materials, fabrication, transportation, installation (including any site modification), and post-installation documentation.

C. **Project:** **New Public Health Bldg. & Parking Deck**

a. **Location:** Raleigh, North Carolina

b. **Project Background & Context:**

Wake County has elected to locate the new Public Health Center on a county-owned 15-acre property located along Swinburne Street and bordered by Falstaff and Kidd Roads. The site currently houses the 5-story Swinburne Human Services as well as two additional social services

facilities off Falstaff Road. The proposed plan demolishes the two facilities along Falstaff to provide a sufficiently clear footprint to build a new 4-story Public Health Center building to create a Wake County Social Services and Public Health Campus.

It is anticipated that the four-story new Public Health Center will provide all its services in a 151,000 square foot building. Wake County engaged with a health service consultant to understand how the delivery of public health services needs to change to meet anticipated patient volumes while maintaining efficiency within Wake County's portfolio of buildings. The new facility will be organized to surround the county's clients with services, as opposed to having the client navigate through the facility, as has been the ongoing practice. This organizational metric will be further studied during the Schematic and Design Development phases of the project. The proximity between the Swinburne Social Services Center and the New Public Health Center will allow a "one-stop" experience for Wake County citizens in need of assistance whether it be with social and economic services or with personal health assistance. or Health aspects.

c. Scope Overview:

As the Design Development is just beginning, this provides the selected artist the opportunity to be engaged with the design team and Construction Manager at Risk, throughout much of the remainder of the design process.

d. Project Schedule:

The New Public Health Bldg. is currently in design, with construction anticipated to start early in 2023 and final completion in February of 2025.

Note: The commissioned artist will be issued sets of construction documents for both Library projects. The selected artist shall verify all dimensions prior to the commencement of work.

III. Artist Commission Requirements

If commissioned, the successful Artist shall be responsible for the following:

- A. This is a national call open to artists in the continental U.S. over the age of 18.**
- B. Perform all services and furnishing supplies, materials, and equipment as necessary for the design, execution, fabrication, transportation, and installation of the Work at the Site.
- C. Submit to Wake County detailed drawings of the commissioned Work in order to carry out architectural and engineering design reviews and to certify compliance of the Work with applicable statutes and ordinances
- D. Strictly adhere to and manage the approved project, budget, and schedule.

- E. Provide an Operations and Maintenance guideline to the County for their respective art piece(s).
- F. Bear the entire risk of loss or damage to the Work during design, fabrication, packing, shipping, and installation.
- G. Provide and maintain insurance to cover claims for damages for personal injury, bodily injury (including wrongful death), and property damage. The artist shall require all subcontractors to provide and maintain insurance. A complete list of insurance requirements will be provided to project finalist.
- H. In general, the County shall own the physical works of art, and copyrights shall be retained by the artist, with reproduction rights allowed the County for appropriate promotional and educational purposes. Legal title and copyrights in any work of public art funded in whole or in part by direct County funding, shall be spelled out in a mutually agreeable contract between the County and the artist.

IV. Submission Schedule & Location

- A. Submission deadline: **2:00 PM (EST), June 22nd, 2022**

Any submissions received after the deadline time will be ineligible.

- B. Schedule Information:

Post RFQ	May 24th, 2022
Written Inquiries must be received by	June 14th, 2022
Reponses to Inquiries	June 17th, 2018
Submissions are due by 2:00PM(EST)	June 22nd, 2022
Finalist(s) selected and notified for Site Visit	Week of July 18th, 2022
Finalist(s) Interviews	Week of August 8th, 2022
Commission awarded	August 29 th , 2022

WC FD&C reserves the right to modify this schedule as required.

V. Submission Requirements

All applications must be submitted electronically as a single PDF file. The PDF file, no larger than 15MB is to be emailed to WCArtistCallPHB@wakegov.com by the deadline, **2:00 PM (EST) on Wednesday, June 22, 2022**. Label PDF file as follows: **(Last Name-First Name-Middle Initial)**. Incomplete applications, and any applications submitted after the deadline will be deemed ineligible and not be considered. Submission shall include the following:

- A. Format

Cover Sheet:

- Include name, address, telephone, email, and website (if applicable) of the Artist to receive all Project Information, or any official correspondence relating to the Project.

- Please reference the Project name, **Wake County New Public Health Building**, on all correspondence.

Section 1: Artist Resume & References (No longer than 3 pages – including additional team member or subconsultants resumes)

- Include a list of public art projects, completed during the past ten (10) years, selected public art projects, awards, current gallery affiliations, and grants/fellowships.

Section 2: Digital Images of Past Work

- Images of Previous Work. Please closely observe the following guidelines for the submittal of digital images:
 - Submit eight (8) images featuring select examples of previous public art projects with particular emphasis on works of similar scope or utilizing similar techniques. Each image shall be numbered and include title, date of completion / installation, budget, media, dimensions, location, and a brief description of the work.

Section 3: Statement (No longer than 2 pages)

- Artist Statement
 - Describe the conceptual basis for your body of work. In a separate paragraph, explain your experience working and coordinating with landscape architectural / architectural / engineering teams when incorporating art into a site and facility.

Email Submission to (PDF shall be no larger than 15MB):

WCArtistCallPHB@wakegov.com

* Wake County reserves the right to request additional information from each individual artist.

B. Other Requirements

1. Any cost incurred in preparing or submitting a Request for Qualifications for the Project shall be the respondents' responsibility.
2. All responses, inquiries or correspondence relating to this Request for Qualifications will become the property of Wake County when received (subject to Section VII – Confidentiality).
3. Please contact the Facilities Project Manager at the address shown below for a copy of the Request for Qualifications. If a question of general concern is asked, an addendum will be issued to include a copy of the written response.
4. Respondents are advised to refrain from contact with Selection Committee members. Any specific questions regarding the Request for Qualifications should be directed to the Project Manager at the following address:

John de Haro
Facilities Project Manager
County of Wake Facilities Design & Construction
Wake County Office Building, 11th Floor
P.O. Box 550, Raleigh, NC 27602
TEL (919) 856-6361
WCArtistCallPHB@wakegov.com

5. Wake County has sole discretion and reserves the right to reject any and all responses received with respect to this Request for Qualifications and to cancel the process at any time prior to entering into a formal agreement. The County reserves the right to request additional information or clarification of information provided in the response without changing the terms of the Request for Qualifications.

VI. Evaluation Criteria & Process

A Selection Committee of Nine (9) individuals, will select the artist that best meets the requirements, based on the information contained in their response to the Request for Qualifications. Specifically, in the selection of a finalist, the Selection Committee will review and consider the following:

- A. The conceptual basis for the Artist's body of work as defined in the written statement.
- B. The technical and aesthetic quality of the artist's past work as represented in the image submissions.
- C. Artist's experience successfully designing, fabricating, administering, and completing public art projects and/or custom architectural elements on time and in budget.
- D. Artist's experience successfully completing prior work in accordance with the Owner's schedule and budget.
- E. Artist's experience working collaboratively with a project team, including Owner, Architect and General Contractor
- F. The artist's education and training.
- G. The quality and comprehensiveness of the submission package.

The intent of the process is to flow as efficiently as possibly while following the dates indicated in Section IV. After submission deadline, selection committee will review each submission and will narrow the pool of applicants to three (3) finalists.

Each of the three (3) finalists will be provided a stipend of two thousand dollars (\$2,000.00) to facilitate travel to Raleigh, North Carolina with the intent of familiarizing the finalist to the library sites. Site visits will terminate with the Selection Committee interviewing each of the three finalists. Once interviews are completed, Wake County will contact the selected artist and retain the services of selected artist via an initial design contract. Once design is completed and approved, a final fabrication contract will be issued for completion of the scope of work as outlined in Section III.

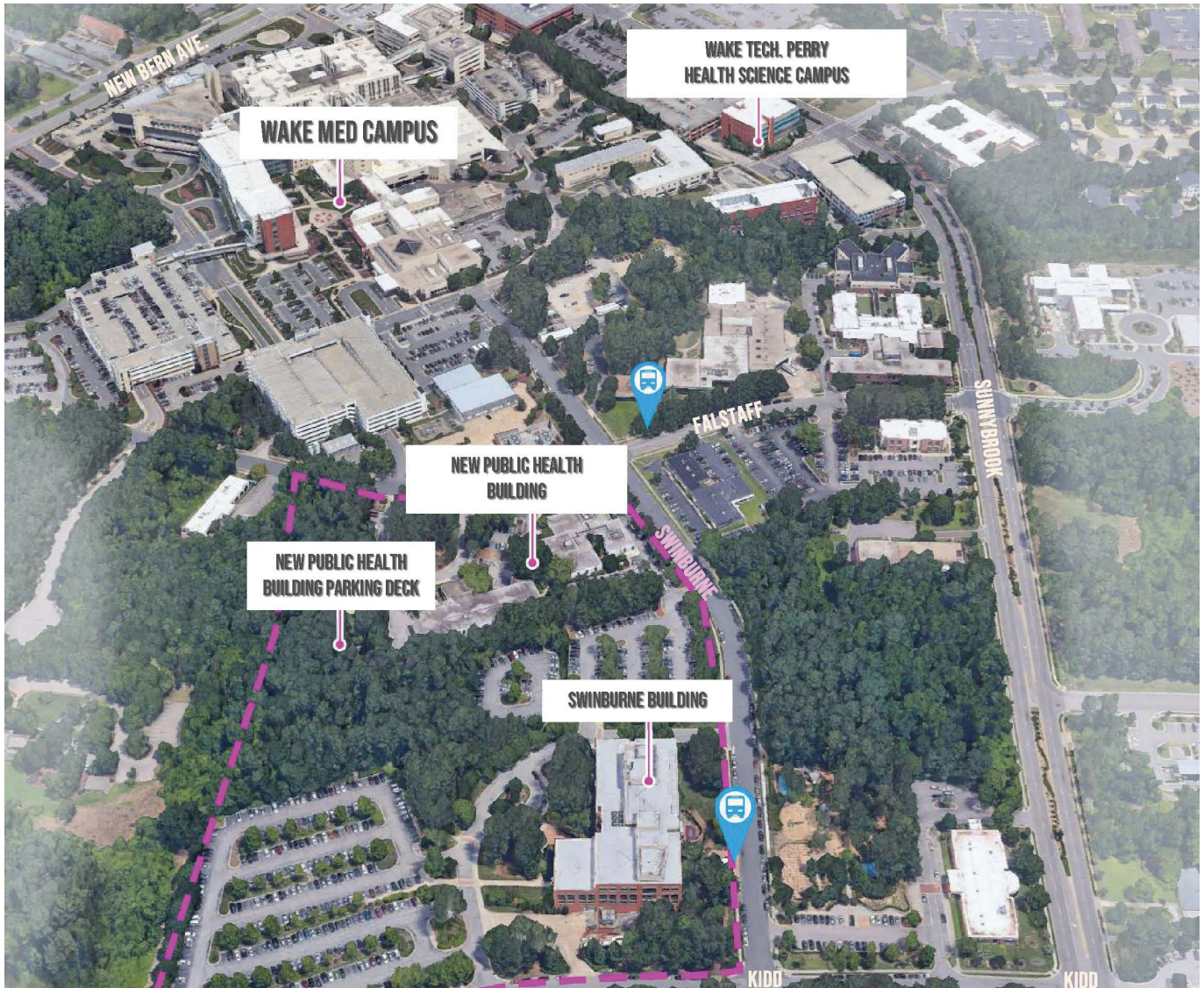
VII. Confidentiality of Documents

In general, documents that are submitted as part of the response to this Request for Qualifications will become public records and will be subject to public disclosure. North Carolina General Statutes Section 132-1.2 and 66-152 provide a method for protecting some documents from public disclosure. If the Artist or Artist Team follows the procedures prescribed by those statutes and designates a document “confidential” or “trade secret”, the County will withhold the document from public disclosure to the extent that it is entitled or required to do so by applicable law.

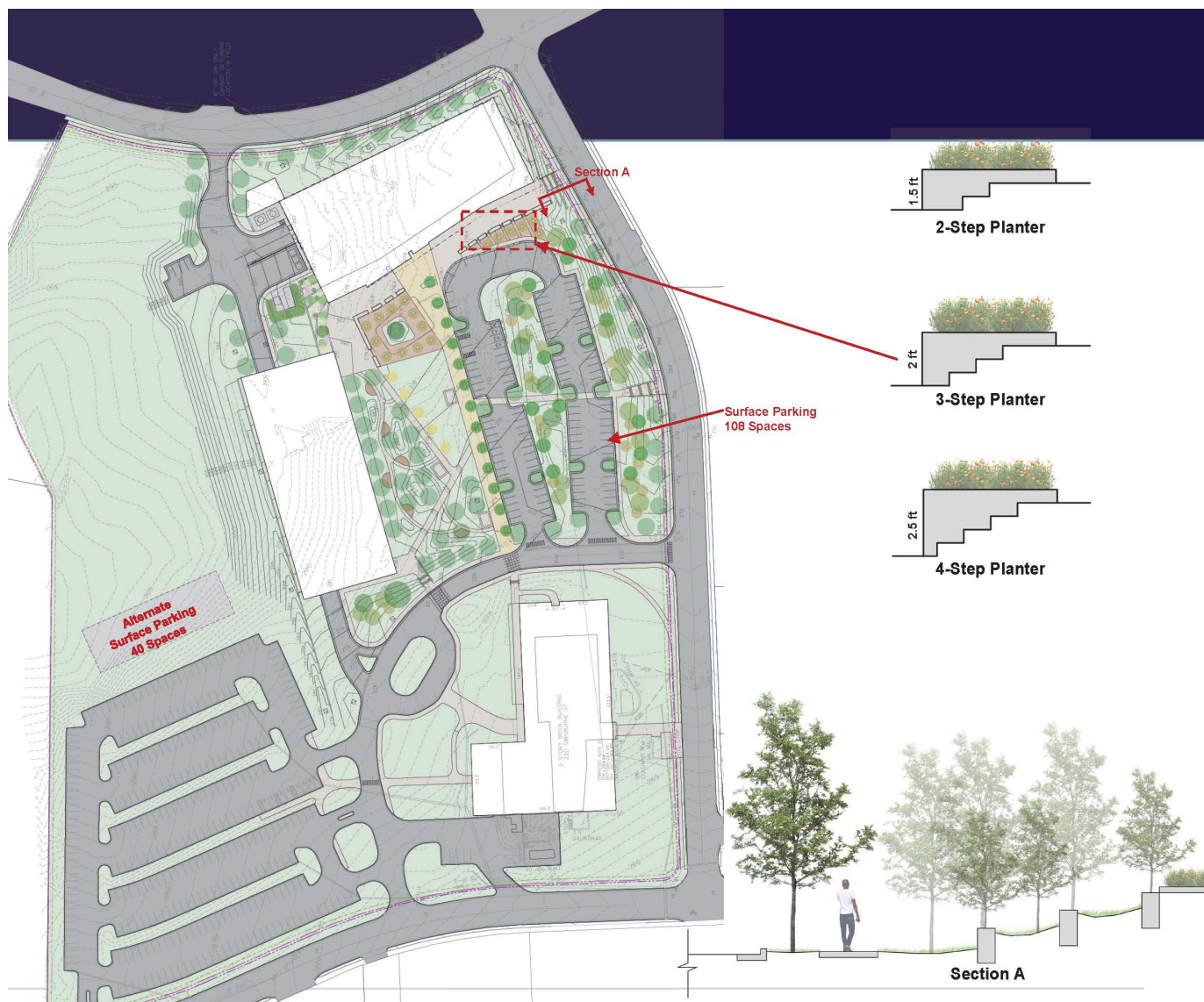
If the County determines that a document that the Artist has designated “confidential” or “trade secret” is not entitled to protection from public disclosure, the County will provide notice of that determination to the contact person designated by the Artist, in any reasonable manner that the County can provide such notice, at least five business days prior to its public disclosure of the document. If the Artist or Artist Team does not designate anyone to receive such notice, or if, within five business days after the designated person receives such notice, the Artist does not initiate judicial proceedings to protect the confidentiality of the document, the County will not have any obligation to withhold the document from public disclosure.

By submitting to the County a document that the Artist or Artist Team designates as “confidential” or “trade secret”, the Artist(s) agree that in the event a third party brings any action against the County or any of its officials or employees to obtain disclosure of the document the Artist(s) will indemnify and hold harmless the County and each organization’s affected officials and employees from all costs, including attorney’s fees incurred by or assessed against any defendant, of defending against such action. The Artist(s) also agrees that at the County’s request the firm will intervene in any such action and assume all responsibility for defending against it, and that the Artist(s) failure to do so will relieve the County of all further obligations to protect the confidentiality of the document.

**EXHIBIT #1 – SITE LOCATION
HEALTH & HUMAN SERVICES CAMPUS**



**EXHIBIT #2 – SITE PLAN
HEALTH & HUMAN SERVICES CAMPUS**



**EXHIBIT #3 – CAMPUS CONCEPT RENDERING
HEALTH & HUMAN SERVICES CAMPUS**



**EXHIBIT #4 –CONCEPT BLDG. ELEVATION
HEALTH & HUMAN SERVICES CAMPUS**

