

CALL TO ARTWORK

The Art in Architecture (AIA) Program of the University of Illinois is pleased to announce a Call for Art (CFA). Artists are invited to submit proposals for consideration to be considered for permanent public art at the University of Illinois Urbana-Champaign (UIUC). The Art in Architecture committee will consider purchasing available works of art as well as commissioning new work. This call seeks art for the new South Campus Center for Interdisciplinary Learning (SCCIL) in Champaign, Illinois. The project is scheduled to start construction in May 2023 and is scheduled for completion in late December 2024. The plan is to make the award early in 2024, with installation in spring 2025.

Project Name: South Campus Center for Interdisciplinary Learning
Project Number: U20115
Submission Deadline: March 30, 2023
4:00 P.M.

ELIGIBILITY

This CFA is open to all artists, artisans, designers, or artist-led teams with a substantial track record currently residing and legally permitted to work in the United States.

PROJECT SUMMARY

The project consists of a new 4-story structure designed to house instructional, studio, and meeting spaces as well as faculty offices. The new facility will satisfy a need for additional room on campus to accommodate democratizing education and support the University's land-grant mission with on-line education, experiential learning, expanded enrollment, and the support growth of faculty and academic staff within a new flexible, sustainable, and resilient facility. The instructional space -- including the classrooms and studios -- will be general assignment spaces open to all of campus, rather than designed primarily for a single college or department. The structure will be located between the existing Business Instructional Facility (BIF) and Huff Hall on the current E12 parking lot on the University of Illinois Urbana-Champaign campus. The building address will be 503 Gregory Drive, Champaign, IL 61820.

The project architect and the AIA committee have identified multiple potential locations for artwork throughout the building and on the exterior site. These locations are not intended to limit the artists, who are welcome to propose alternate locations.

ARTISTIC OBJECTIVES

The committee has created the objectives for specific area to complement both the building and campus. Choice of media for the project is broad but should be in material suitable for a long life in either an exterior or interior environment. Both two- and three-dimensional artwork are welcome. Depending on the location, the artist should consider works that have an impact from both a close-up range and from a distance.

Medium: Two or three-dimensional pieces mounted to the walls, suspended from ceilings, or

placed on the ground mounted.

Theme: This part of campus represents a mingling of core campus academic and public engagement programs. To the south is Krannert Art Museum, the School of Art + Design and the new Siebel Center for Design. The open space in this area was formerly known as the Military Axis, and served as the site for military exercises, and in the new campus landscape plan, the grounds will be reenvisioned with indigenous plantings. To the west is Huff Hall which houses both the College of Applied Sciences and Department of Recreation, Sports and Tourism, as well as athletic facilities. North of the site across Gregory Drive is the Armory which house general assignment classrooms, Air force ROTC, the Illinois Army National Guard Recruiting, athletic facilities, and the Center for Innovation in Teaching & Learning. To the east is the Business Instructional Facility housing the Gies College of Business.

This building will provide a hub for integrated learning for both campus programs and off-campus partners. In addition, it will foster connection with the multiple adjacent programs and disciplines stitching together the various divergent functions.

PROJECT SITE

The proposed locations for artwork appear in the attached document. Final placement of the artwork will be decided by the committee and, where appropriate, in consultation with the artist.

BUDGET DETAILS

The budget shall not exceed \$330,000. The committee will decide how this budget will be divided among multiple works if more than one work is selected.

This budget covers all expenses associated with, but not limited to the design, labor, fabrication, project management, materials, tools, contracted services, operations and meetings, travel, installation, permits, licenses, taxes, insurance, transportation and delivery of the artwork to the site.

If special installation requirements are needed for large and/or complex pieces, the artist is responsible for working with the Project Development Team, Vermillion Campbell Development, and other relevant partners to coordinate all aspects of the installation. The project will provide reinforced, structured attachment points for the artwork to connect. Please provide preliminary weights for heavy building mounted artwork. For ground-mounted works, the artist should provide guidance on pedestals or platforms, although the final decision will be made in consultation with the architect.

SELECTION PROCESS

Artists and/or artist teams may submit their work for consideration as defined below. The artist's work that is selected will be announced via email to all submitters. Once the artwork has been selected, the Development Team will enter into contracts with the selected artist/s.

The Art in Architecture Coordinator will contact the successful candidate to request a formal proposal.

HOW TO APPLY

Artists and artist-led teams interested in the project should email one copy of each of the following items. Each should be labeled with the artist's name, the project name, and project number.

- Images of the artwork (photography for extant work, and detailed renderings for proposed commissions) along with dimensions, materials, and general description of the work
- Artist CV (if a team, one from each member) with contact information
- Artist Statement of intent (one page maximum, specifically about the proposed work, not only a generic artist statement)
- Contact information for professional references

Note: Send images as JPEG or PDF files only. All submittals become the property of the University of Illinois Art in Architecture Program and will not be returned. The artist retains all copyrights to their work.

HOW TO SUBMIT

Interested artists must send complete proposals by **March 30, 2023 at 4:00 P.M.**

Submissions received after this date will not be considered for this project but will be kept for possible review and consideration for other Art in Architecture projects.

Submission material may be delivered by:

Email to fandsartinarch@mx.uillinois.edu

QUESTIONS

Contact: Doug Reddington @ dredding@illinois.edu

Appendix:

UNIVERSITY OF ILLINOIS URBANA-CHAMPAIGN

SOUTH CAMPUS CENTER FOR INTERDISCIPLINARY LEARNING



EXTERIOR LOCATIONS



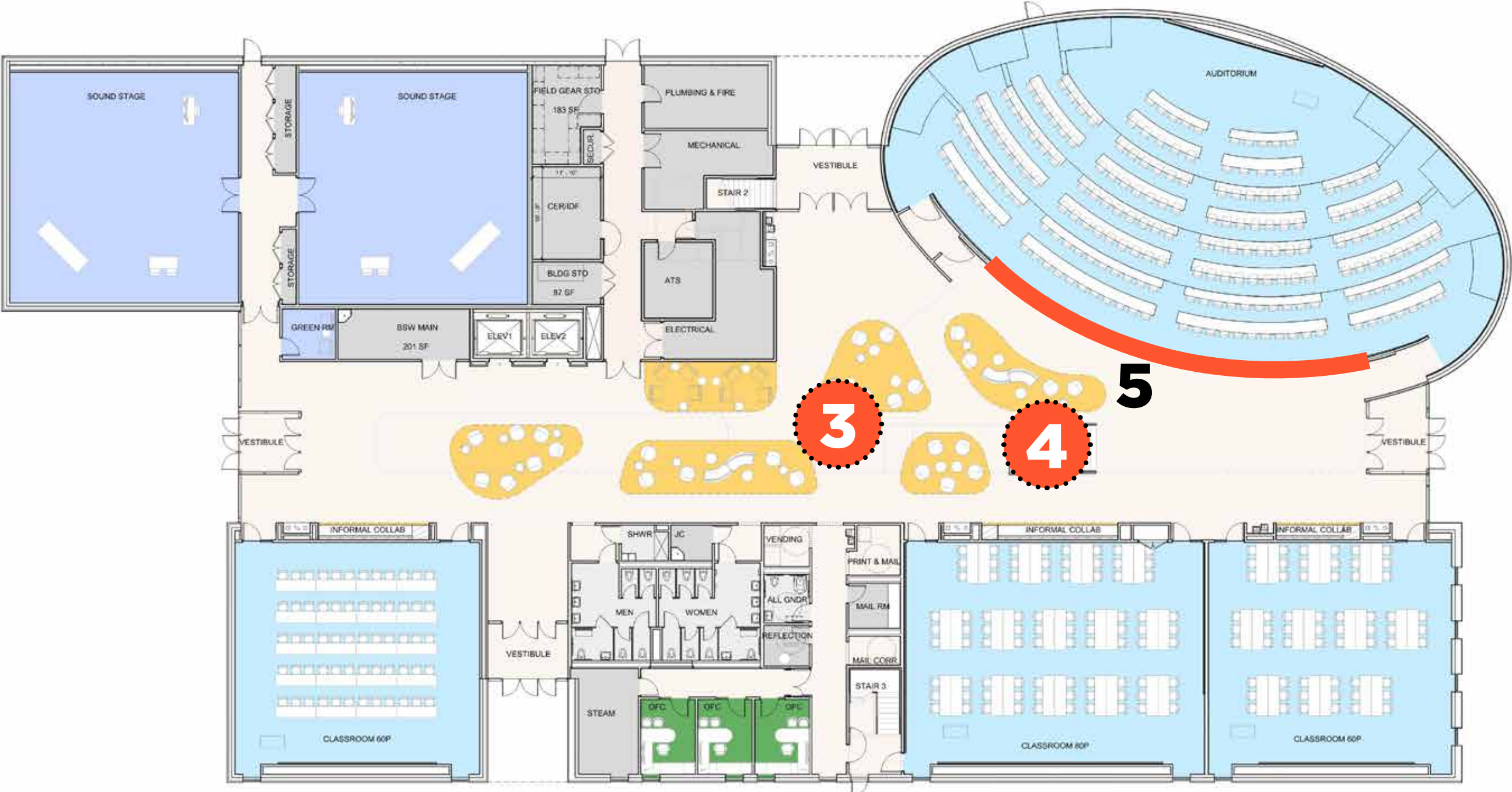
1 | BETWEEN SCCIL & BIF



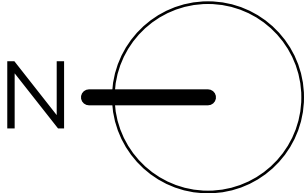
2 | ALONG MILITARY AXIS



LEVEL 1



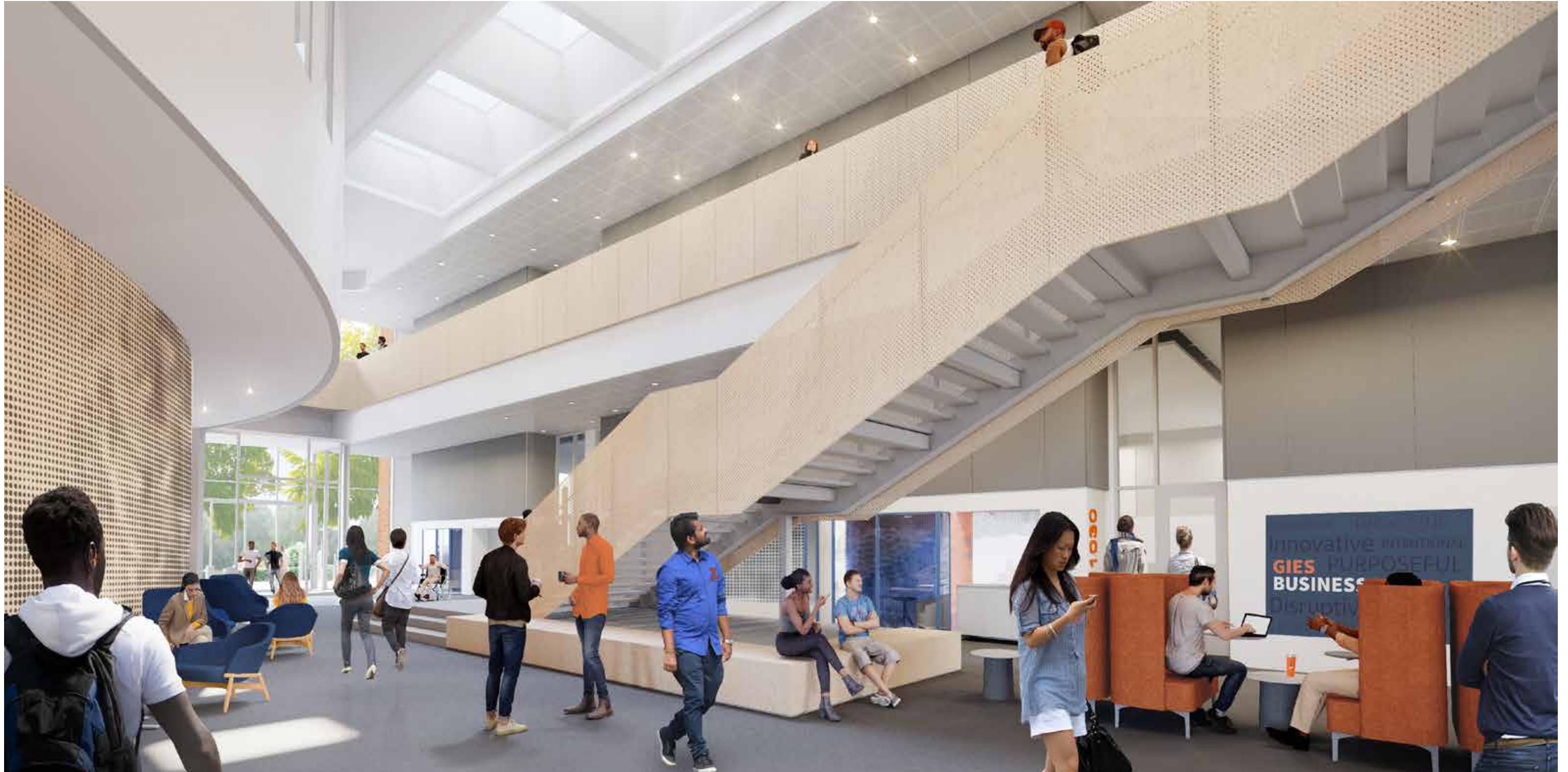
- | | | |
|-----------------------------|---------------------------|-----------------------------|
| CLASSROOM | COLLABORATION / RECEPTION | OFFICE - FACILITIES |
| TEACHING & LEARNING STUDIOS | SOCIAL KITCHEN | OFFICE - DEI |
| INFORMAL LEARNING | OFFICE - FACULTY | OFFICE - DISRUPTION & INNOV |
| RESTROOM / SHOWER | OFFICE - HOTELING | OFFICE - OP & TL |
| BACK OF HOUSE / SUPPORT | OFFICE - MAGELLI | CIRCULATION |



3 | IN THE CENTRAL STREET



4 | THE STAIR



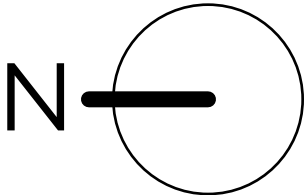
4 | AUDITORIUM WALL



LEVEL 2



- | | | |
|-----------------------------|---------------------------|-----------------------------|
| CLASSROOM | COLLABORATION / RECEPTION | OFFICE - FACILITIES |
| TEACHING & LEARNING STUDIOS | SOCIAL KITCHEN | OFFICE - DEI |
| INFORMAL LEARNING | OFFICE - FACULTY | OFFICE - DISRUPTION & INNOV |
| RESTROOM / SHOWER | OFFICE - HOTELING | OFFICE - OP & TL |
| BACK OF HOUSE / SUPPORT | OFFICE - MAGELLI | CIRCULATION |



6 | DOUBLE HEIGHT VOLUME



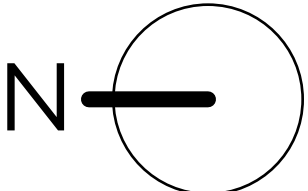
6 | DOUBLE HEIGHT VOLUME



LEVEL 3



- | | | |
|-----------------------------|---------------------------|-----------------------------|
| CLASSROOM | COLLABORATION / RECEPTION | OFFICE - FACILITIES |
| TEACHING & LEARNING STUDIOS | SOCIAL KITCHEN | OFFICE - DEI |
| INFORMAL LEARNING | OFFICE - FACULTY | OFFICE - DISRUPTION & INNOV |
| RESTROOM / SHOWER | OFFICE - HOTELING | OFFICE - OP & TL |
| BACK OF HOUSE / SUPPORT | OFFICE - MAGELLI | CIRCULATION |



7 | TERRACE



DISTRIBUTED

